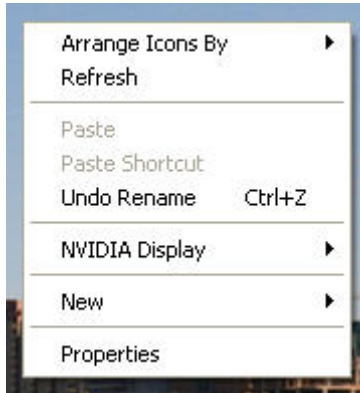


Configuring ScreenPrint 32 Software

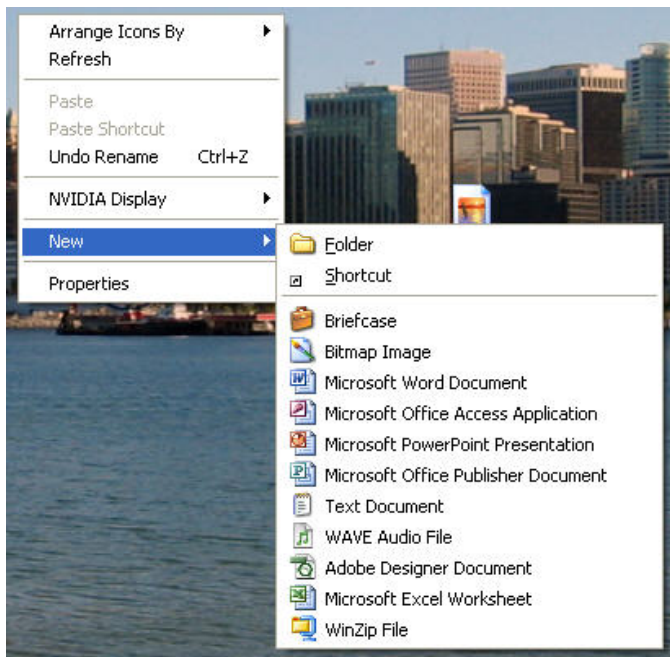
(Click Here To Download Program)

Once you have completed the installation of ScreenPrint32, you will need to configure it.

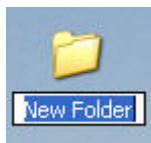
1. You will need to create a folder on your Desktop to store the screen shots. First, right click on your desktop.



2. Select "New"

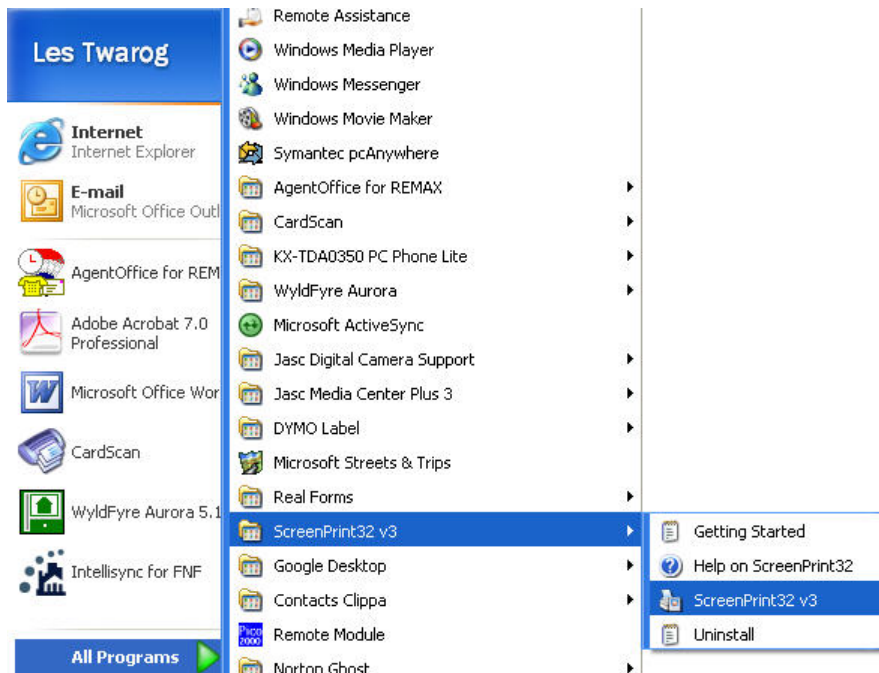


3. Select "Folder" and a new folder will appear on your desktop. You can rename the folder to something you will remember.

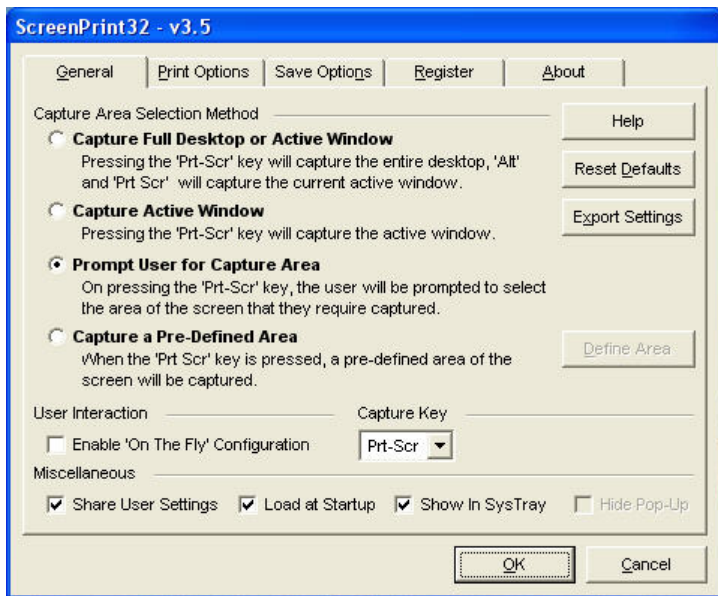


4. Once you have the folder created, you can go ahead and configure the software

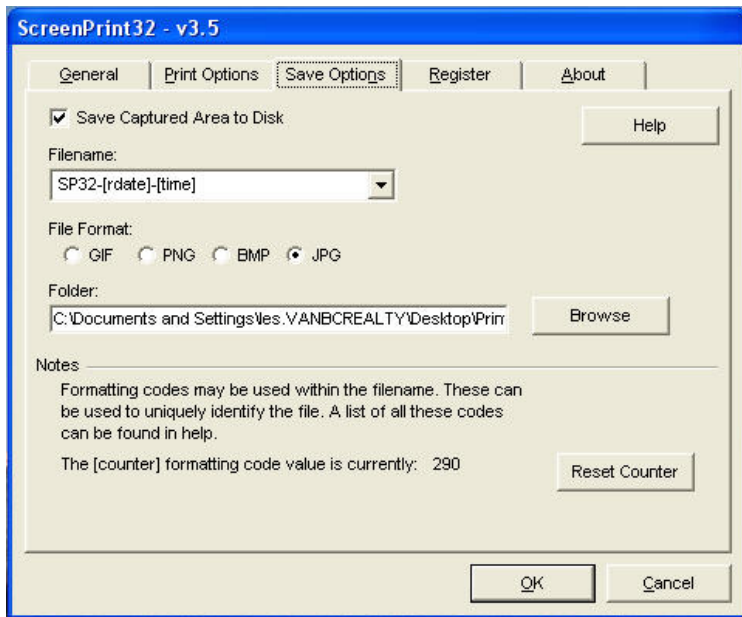
5. Go to your Programs menu and click on the “ScreenPrint32” icon



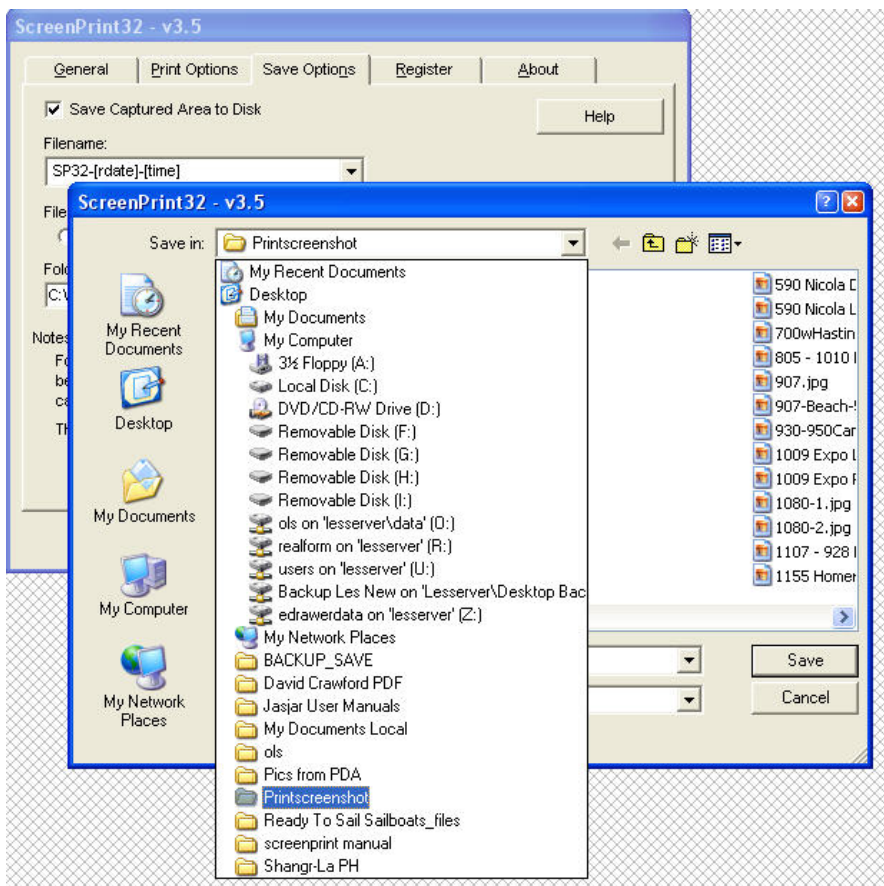
6. On the configuration screen, first select the “General” Tab. Make sure it is configured as below:



- Now select the “Save Options” Tab. Make sure the “Save Captured Area to Disk” box is checked off. Next select “JPG” under “File Format”



- Click “Browse” to locate the folder you created earlier.



9. Click "OK" and the software is ready to use.

10. To use, simply press the printscreen, "PrtScn" button on your keyboard. Now take the mouse cursor to the top left part of the area you want to capture. Then simply drag your mouse diagonally downward until the area is select. Finally, right click the highlighted area and select "Capture Selected Area". The file will automatically be saved into the folder that you created on your desktop.