



EL ZALATE
BEACHFRONT VILLAS

One Bedroom Floor Plan

Villa Area

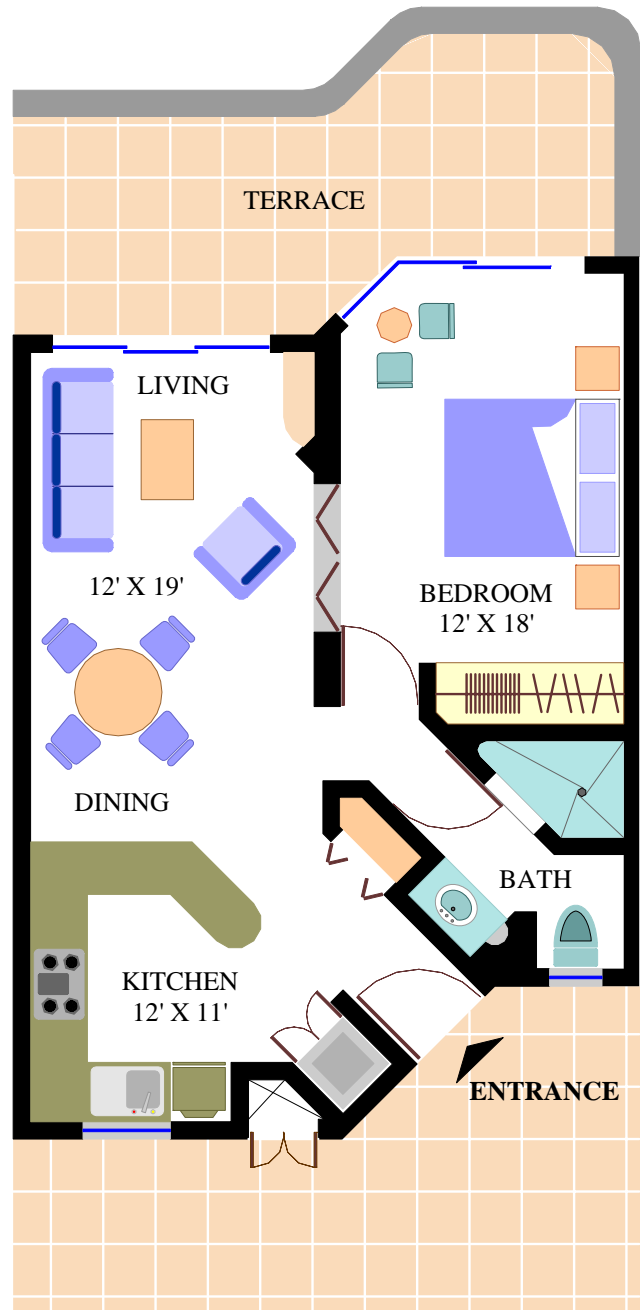
64.70 m²
697.00 Sq. Ft.

Deck Area

20.25 m²
217.65 Sq. Ft.

Total Area

85.00 m²
914.65 Sq. Ft.



Not to scale. All dimensions are approximate



EL ZALATE
BEACHFRONT VILLAS

Two Bedroom Floor Plan

Villa Area

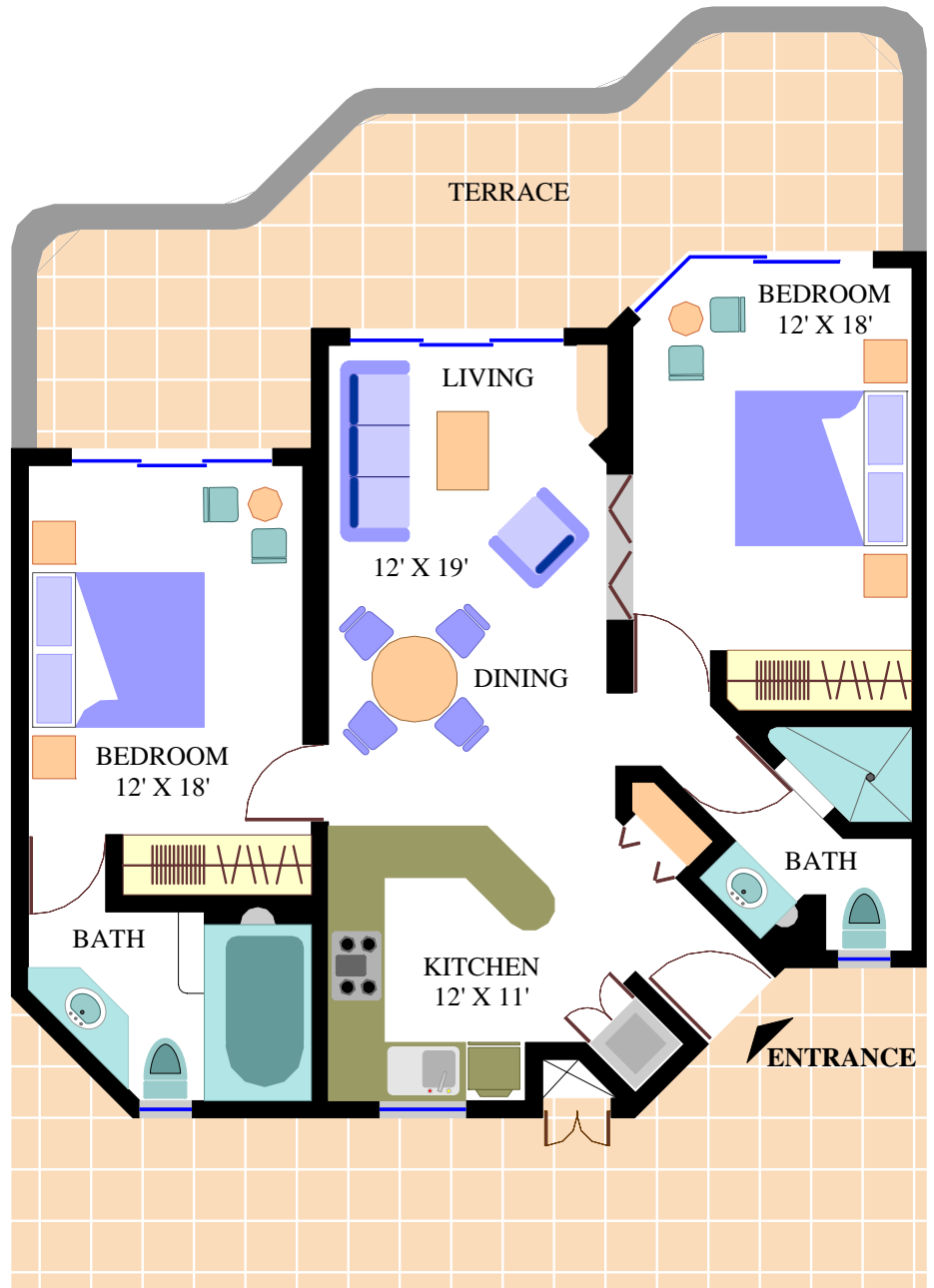
90.00 m²
980.00 Sq. Ft.

Deck Area

30.40 m²
327.00 Sq. Ft.

Total Area

120.40 m²
1,307.00 Sq. Ft.



Not to scale. All dimensions are approximate



EL ZALATE
BEACHFRONT VILLAS

Villa Area

204.00 m²
2,193.00 Sq. Ft.

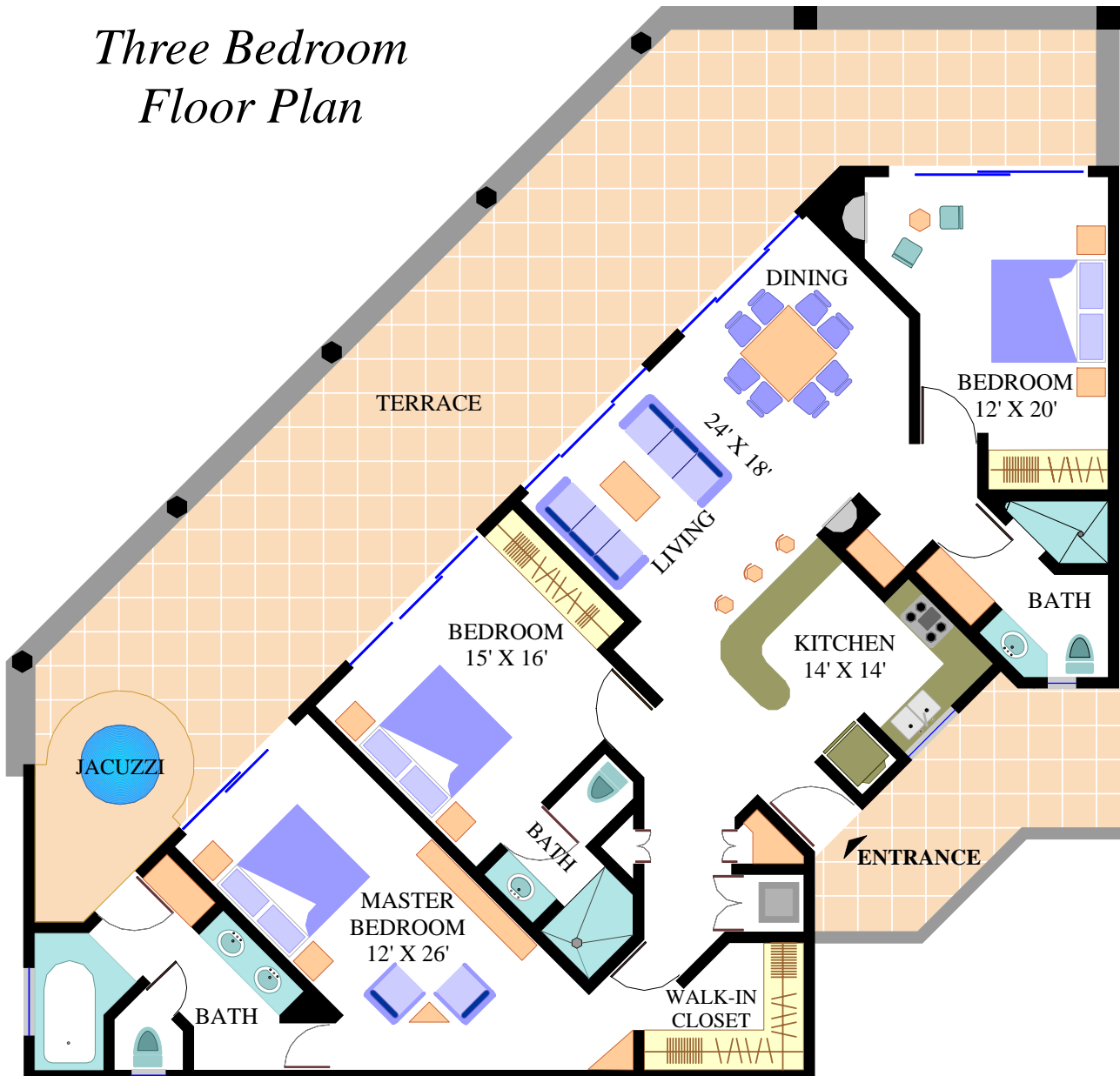
Deck Area

82.00 m²
881.00 Sq. Ft.

Total Area

286.00 m²
3,074.00 Sq. Ft.

Three Bedroom Floor Plan



Not to scale. All dimensions are approximate

Sea of Cortez



EL ZALATE
BEACHFRONT VILLAS

Coral Baja Resort



La Jolla Condominiums

Km. 28 Transpeninsular Hwy., San Jose del Cabo

- ◆ *Unobstructed Sea of Cortez Views*
- ◆ *Safe, Tranquil and Secure*
- ◆ *Bordering quaint San Jose del Cabo*
- ◆ *Minutes from 6 World Class Championship Signature Golf Courses*
- ◆ *And much more...*