



VANCOUVER WESTSIDE & DOWNTOWN SPECIALISTS

604-805-1283

www.6717000.com



**1000 BEACH**  
201 – 1010 Beach \$1,690,000

1917 sf WATERFRONT RESIDENCE at "1000 Beach" Development. Perched on the seawall and offering sensational direct water views to the marina, Granville Island, False Creek & English Bay from the huge 400 sf west facing enclosed solarium. 46' Boat Slip also available.



**MACKENZIE HEIGHTS**  
2502 W 36th \$4,600,000

Beautiful Custom Built Home with 5345 s/f, 71' x 133' lot, 6 bdrms & 7 baths. Indoor pool/ hot tub & waterfall in Grotto rock setting. Features A/C, HRV, security and cameras. Inlaw suite downstairs & media room, 3 car garage w/office with a 3 piece bath.



**EXECUTIVE LOG HOME**  
1561 Smith Rd., Gibsons \$1,275,000

4267 sf, 5 bedroom, 4 bathroom. West Coast Executive Log home on 3 levels with ocean view. Located within walking distance of the 40 min ferry ride to Van. In a quiet setting with views of the North Shore Mountains and the ocean. Available for immediate occupancy.



**ATELIER**  
3105 – 833 Homer \$1,265,000

1350 sf, N/W facing 2 bedroom + den + storage Sub Penhouse with with 3 bathroomss & terrace. Features include open spacious living area, stunning chef-inspired kitchen with granite countertops, top of the line appl & A/C. Tenanted at \$3,400/mo



**ALTO**  
302/303 – 1205 Howe \$466,000 each

2 suites, side by side with huge patio at "Alto" (Howe & Davie). 659 s/f, 1 bed+ den, 10' ceilings, 1 park + 1 storage included, pets & rentals OK. Both rented at \$1,700/mo.



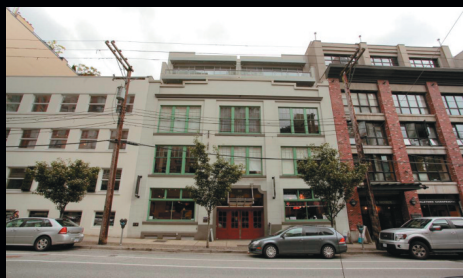
**WEST COAST STYLE HOME**  
4722 Meadfeild Pl., WV \$2,450,000

"West Van" Situated on almost 17,000 sf of land on a quiet cul-de-sac in Caulfield. The automatic gated private driveway leads to this 4,000 sf + home which features 4 bedrooms and 4 baths.



**ATRIUM AT THE PIER**  
TH167 Esplanade, North Van \$599,000

Stunning 882 sf, 2 level, 1 bedroom + den + 1.5 bathroom, NE facing view townhouse at Atrium at the Pier. TH feat: 9' ceilings, A/C and high-end S/S appl. Convenient location steps to shops, restaurants, the Seabus and all that vibrant Lower Lonsdale. 1 parking & 1 locker. Pets & Rentals OK.



**THE ELLISON**  
205 – 1228 Homer \$625,000

935 sf 1 bedroom + den in Vancouver's most sought after location, Yaletown. This Heritage conversion has 11 foot ceilings, extra large windows, exposed fir beams, concrete walls and wood floors. Beautiful open floor plan with lots of space and light. Parking and storage included.



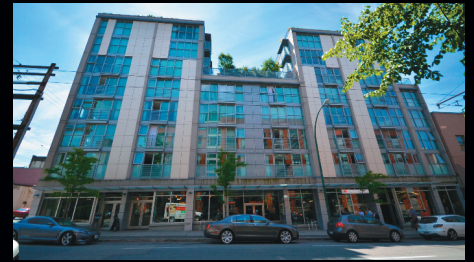
**CAMBRIDGE GARDENS**  
1001 – 2668 Ash \$559,000

S/W views of the City and mountains from this bright well laid out suite. All the rooms are a generous size. This suite is 1100 sf and has two bedrooms and two full bathrooms. Has a great central location in the City Hall area. Steps to Skytrain, shopping (City Square) as well as the stores on the Cambie corridor. One parking stall.



RE/MAX Crest Realty (Westside)  
Les Twarog • les@6717000.com  
1428 W 7th Avenue, Vancouver, BC V6H 1C1

**604.671.7000**  
**www.6717000.com**



**PH806 – 168 Powell, Gastown - \$699,000**

"Smart Gastown Living" by Concord Pacific. Boutique building Designed by Busby Perkin/Willis Architects. Two level Penthouse, 1035 sf, 2 bedroom + office + 282 sf private roof deck with wonderful water & mountain views from every window including 360° deck view. Features include European style linear kitchen with Stainless Steel appliances, sliding frosted glass bedroom doors, bamboo laminate flooring & solid Avonite countertops. Facility Includes exercise/yoga, meeting & bike room (lobby level) + 7th floor common courtyard. Smart (<http://www.6717000.com/smart/>) is located in the heart of Gastown's historical district w/shopping, skytrain, fabulous dining and all amenities of daily life at your doorstep. Park#57(P1), locker#67(P1), Locker rm#4, Bike rm #114. Developer has extra parking in the building for sale, #20 (P1) \$37,000 & #64 (P2) \$38,000



**FIRENZE II**  
2207 – 688 Abbott **\$539,900**

Fabulous 866 sf, 2 bed, 2 bath with solarium on the N/W corner with sweeping mountain and water views. Open Floorplan with separate bedrooms layout. Features include insuite storage, solarium and open balcony, contemporary finishings with stainless steel appliances, insuite laundry and fireplace.



**RESIDENCES ON GEORGIA**  
3203 – 1200 W Georgia **\$699,999**

1002 sf, 2 bed, 2 bath + Den w/ balcony at 'Residences on Georgia' by Westbank at West End Neighbourhood. Facing Northeast with spectacular views of Ocean and North Shore Mountains. Convenient Downtown location, walking to Skytrain Station, Robson Street, Coal Harbor and financial district.



**L'HERMITAGE**  
1807 – 788 Richards **\$485,000**

Elegant 671 sf, 1 bedroom, 1 bathroom + den, NE corner unit at the prestigious L'Hermitage Boutique Hotel & Residence with fantastic city, mountains & harbour views. A chef's kitchen, high-end appliances, Juliet balcony, spa-like bathroom.



**NORTH BURNABY LAND ASSEMBLY**  
5509 – 5525 E Hastings

Land assembly in North Burnaby, 266 x 133 lot, C2 Zoning. Call Realtor for info package and feasibility study.



**AQUA AT THE PARK**  
1801 – 550 Pacific **\$788,000**

1,055 sf, south facing 2 bedroom, 2 bathroom + Den suite at "Aqua at the Park" by Concorde at Beach Crescent Neighborhood. Gorgeous view of False Creek & George Wainborn Park from every room and balcony.



**8 SUITE APT BLDG**  
53 E 13th Avenue **\$2,800,000**

Mount Pleasant! Excellent investment/cash flow property! Recently renovated in 2011! \$100,000 invested into new pipes and 2 new boilers. New roof with 25-year warranty. Newer maple kitchen, hardwood floors, dishwasher, balconies - central located in prime West Mount Pleasant.

