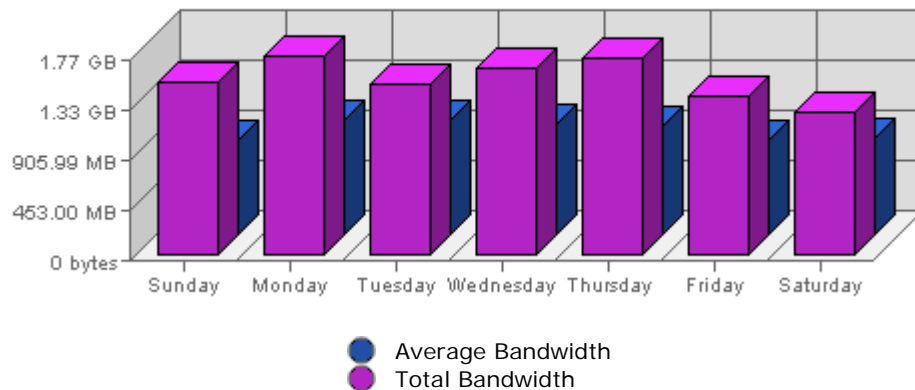


Executive Report
 For the week of September 11th 2005
 For virtual server **LesTwarog**

Bandwidth



Date	Bandwidth	Average	Forecast	% of Total
Sun Sep 11th, 2005	1.54 GB	868.98 MB	n/a ▲	14.11
Mon Sep 12th, 2005	1.77 GB	1.01 GB	n/a ▲	16.19
Tue Sep 13th, 2005	1.52 GB	1.01 GB	n/a ▼	13.91
Wed Sep 14th, 2005	1.66 GB	998.20 MB	n/a ▼	15.24
Thu Sep 15th, 2005	1.75 GB	983.46 MB	n/a ▲	16.02
Fri Sep 16th, 2005	1.40 GB	865.04 MB	n/a ▼	12.88
Sat Sep 17th, 2005	1.27 GB	874.66 MB	n/a ▼	11.64

Summary:

The total amount of bandwidth transferred during the selected week is **10.90 GB**.

The average amount of bandwidth transferred during a week is **2.98 GB**.

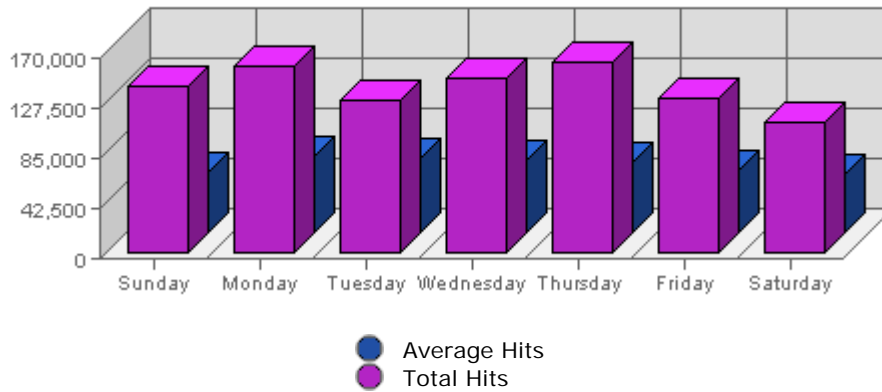
The smallest amount of bandwidth transferred occurred on **Sat, Sep 17th 2005** with **1.27 GB** transferred.

The largest amount of bandwidth transferred occurred on **Mon, Sep 12th 2005** with **1.77 GB** transferred.

On average the smallest amount of bandwidth transferred occurs on **Sunday** with **558.85 MB** transferred.

On average the largest amount of bandwidth transferred occurs on **Tuesday** with **677.38 MB** transferred.

Hits



Date	Hits	Average	Forecast	% of Total
Sun Sep 11th, 2005	141,417	51,821.40	n/a ▲	14.37
Mon Sep 12th, 2005	158,764	65,265.71	n/a ▲	16.13
Tue Sep 13th, 2005	129,615	63,298.91	n/a ▼	13.17
Wed Sep 14th, 2005	149,568	61,565.75	n/a ▼	15.20
Thu Sep 15th, 2005	162,004	60,576.53	n/a ▲	16.46
Fri Sep 16th, 2005	131,765	53,190.71	n/a ▼	13.39
Sat Sep 17th, 2005	111,111	49,625.61	n/a ▼	11.29

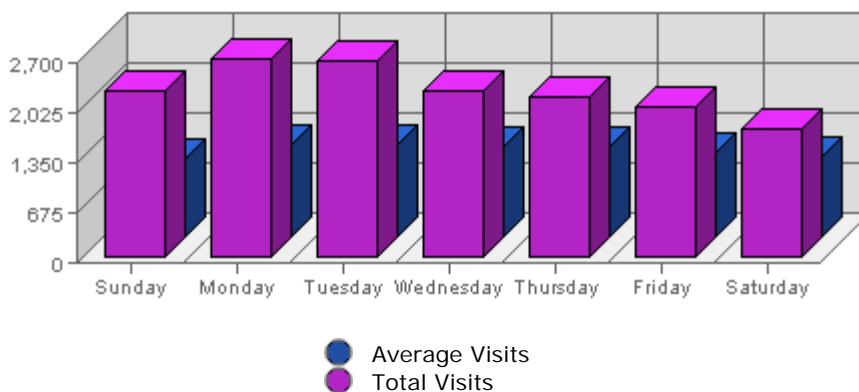
Summary:

The total number of hits during the selected week is **984,244**.
The average number of hits during a week is **289,265.27**.

The smallest number of hits occurred on **Sat, Sep 17th 2005** with **111,111** hits.
The largest number of hits occurred on **Thu, Sep 15th 2005** with **162,004** hits.

On average the smallest number of hits occurs on **Saturday** with **50,240.46** hits.
On average the largest number of hits occurs on **Monday** with **66,191.44** hits.

Visits



Date	Visits	Average	Forecast	% of Total
Sun Sep 11th, 2005	2,245	1,072.56	n/a ▲	14.19
Mon Sep 12th, 2005	2,693	1,250.16	n/a ▲	17.02
Tue Sep 13th, 2005	2,657	1,253.31	n/a ▲	16.80
Wed Sep 14th, 2005	2,256	1,222.91	n/a ▲	14.26
Thu Sep 15th, 2005	2,183	1,234.16	n/a ▼	13.80

Fri Sep 16th, 2005	2,034	1,140.25	n/a ▼	12.86
Sat Sep 17th, 2005	1,751	1,083.78	n/a ▼	11.07

Summary:

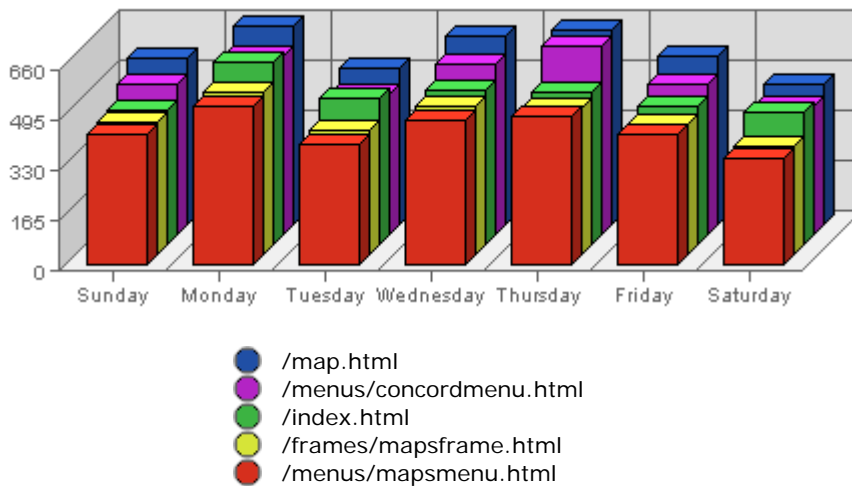
The total number of visits during the selected week is **15,819**.
The average number of visits during a week is **5,891.98**.

The smallest number of visits occurred on **Sat, Sep 17th 2005** with **1,751** visits.
The largest number of visits occurred on **Mon, Sep 12th 2005** with **2,693** visits.

On average the smallest number of visits occurs on **Sunday** with **1,075.51** visits.
On average the largest number of visits occurs on **Tuesday** with **1,267.07** visits.

Most Common Downloads

No Data Available for selected period

Most Common Page Views

URL	Hits	Average	Forecasted	% of Total
1. /map.html	4,009	706.74	n/a ▲	4.30%
2. /menus/concordmenu.html	3,657	1,322.25	n/a ▲	3.93%
3. /index.html	3,438	1,764.55	n/a ▼	3.69%
4. /frames/mapsframe.html	3,159	620.35	n/a ▲	3.39%
5. /menus/mapsmenu.html	3,114	614.04	n/a ▲	3.34%
6. /maps/concordpacific/index.html	3,069	1,049.76	n/a ▲	3.29%
7. /frames/concordframe.html	2,604	843.99	n/a ▲	2.79%
8. /maps/coalharbour/index.html	1,412	543.43	n/a ▲	1.52%
9. /frames/coalframe.html	1,248	438.47	n/a ▲	1.34%
10. /menus/coalmenu.html	1,238	435.91	n/a ▲	1.33%

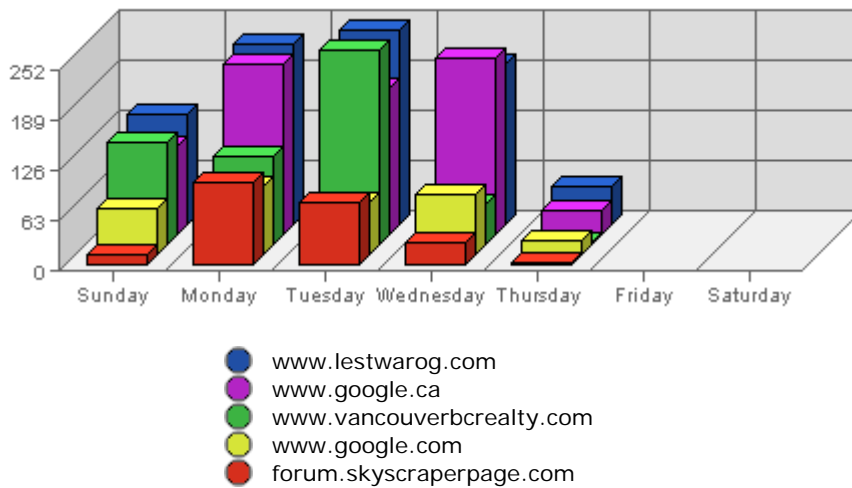
Summary:

- During the selected week, **6,349** distinct pages are responsible for **93,168** page views. (Averaging **14.67** views per page)
- During the previous week, **6,509** distinct pages were responsible for **87,771** page views.

(Averaging **13.48** views per page)

- During the selected week there are **6,349** distinct pages.
During the previous week there were **6,509** distinct pages.
This is a change of **-160 (-2.46%)** distinct pages.
- During the selected week there are **93,168** page views.
During the previous week there were **87,771** page views.
This is a change of **5,397 (+6.15%)** page views.
- The selected week's average (**14.67** views per page) is **up** by **1.19 (+8.83%)** from last week's average (**13.48** views per page).
- **13.72%** of all pages were viewed more than the average (**14.67** views per page), and **86.28%** were viewed less.
- Your top page accounts for **4,009** page views, **4.30%** of all page views.
- **2,189** pages (**34.48%** of all pages) recorded only 1 page view.

Most Common Referring Sites



	Referring Site	Referrals	Average	Forecasted	% of Total
1.	www.lestwarog.com	863	345.84	n/a ▼	23.61%
2.	www.google.ca	765	196.23	n/a ▼	20.92%
3.	www.vancouverbcrealty.com	541	128.11	n/a ▲	14.80%
4.	www.google.com	314	75.77	n/a ▼	8.59%
5.	forum.skyscraperpage.com	233	30.32	n/a ▲	6.37%
6.	vancouver.craigslist.org	134	21.19	n/a ▲	3.67%
7.	search.yahoo.com	124	58.77	n/a ▼	3.39%
8.	www.6717000.com	76	109.84	n/a ▼	2.08%
9.	ca.search.yahoo.com	70	36.73	n/a ▼	1.91%
10.	search.msn.com	43	44.43	n/a ▼	1.18%

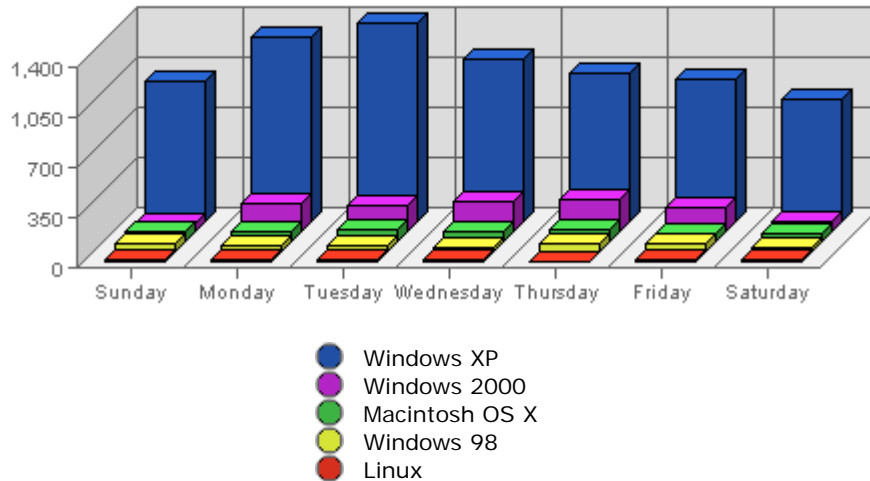
Summary:

- During the selected week, **153** distinct referrers are responsible for **3,656** visits.
(Averaging **23.90** visits per referrer)
- During the previous week, **197** distinct referrers were responsible for **4,286** visits.
(Averaging **21.76** visits per referrer)
- During the selected week there are **153** distinct referrers.
During the previous week there were **197** distinct referrers.
This is a change of **-44 (-22.34%)** distinct referrers.
- During the selected week there are **3,656** referred visits.

During the previous week there were **4,286** referred visits.
This is a change of **-630 (-14.70%)** visits.

- The selected week's average (**23.90** visits per referring site) is **up** by **2.14 (+9.83%)** from last week's average (**21.76** visits per referring site).
- **9.15%** of all referrers provided more visits than the average (**23.90** visits per referrer), and **90.85%** provided less.
- Your top referrer accounts for **863** referred visits, **23.61%** of all referred visits.
- **76** referrers (**49.67%** of all referrers) referred only 1 visit.

Most Common Browser Operating Systems



	Operating System	Visits	Average	Forecasted	% of Total
1.	Windows XP	7,712	2,331.58	n/a ▲	75.22%
2.	Windows 2000	1,137	592.23	n/a ▲	11.09%
3.	Macintosh OS X	552	120.74	n/a ▲	5.38%
4.	Windows 98	366	363.80	n/a ▼	3.57%
5.	Linux	128	52.66	n/a ▼	1.25%
6.	Windows ME	106	125.45	n/a ▼	1.03%
7.	Macintosh PPC	95	63.18	n/a ▲	0.93%
8.	Windows 95	78	32.06	n/a ▲	0.76%
9.	Windows 2003	49	14.65	n/a ▲	0.48%
10.	Windows NT	21	37.92	n/a ▼	0.20%

Summary:

- During the selected week, **14** distinct browser operating systems are seen in **10,253** visits. (Averaging **732.36** visits per browser operating system)
- During the previous week, **12** distinct browser operating systems were seen in **8,535** visits. (Averaging **711.25** visits per browser operating system)
- During the selected week there are visits from **14** distinct browser operating systems. During the previous week there were visits from **12** distinct browser operating systems. This is a change of **2 (+16.67%)** distinct browser operating systems.
- During the selected week there are **10,253** visits with identifiable browser operating systems. During the previous week there were **8,535** visits with identifiable browser operating systems. This is a change of **1,718 (+20.13%)** visits.
- The selected week's average (**732.36** visits per browser operating system) is **up** by **21.11 (+2.97%)** from last week's average (**711.25** visits per browser operating system).
- **14.29%** of all browser operating systems are present in more than the average (**732.36** visits per

browser operating system), and **85.71%** are present in less.

- Your top browser operating system accounts for **7,712** visits, **75.22%** of all visits.
- **1** browser operating system (**7.14%** of all browser operating systems) recorded only 1 visit.