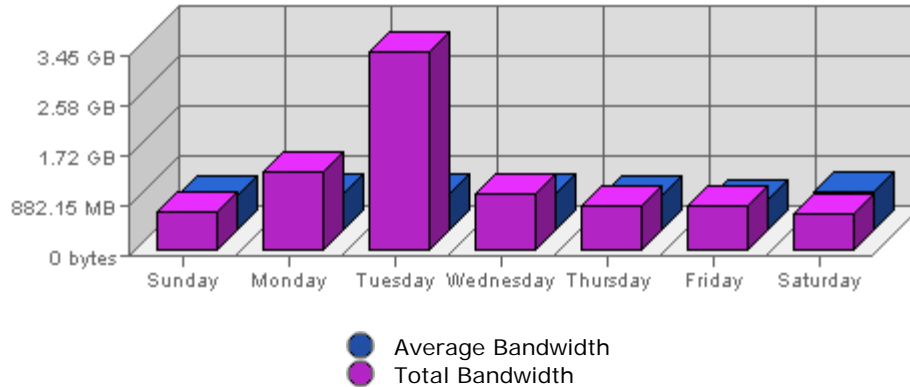


Executive Report
 For the week of January 16th 2005
 For virtual server **LesTwarog**

Bandwidth



Date	Bandwidth	Average	Forecast	% of Total
Sun Jan 16th, 2005	700.92 MB	613.32 MB	n/a ▼	7.92
Mon Jan 17th, 2005	1.35 GB	665.80 MB	n/a ▲	15.63
Tue Jan 18th, 2005	3.42 GB	651.58 MB	n/a ▲	39.56
Wed Jan 19th, 2005	1008.14 MB	644.04 MB	n/a ▲	11.39
Thu Jan 20th, 2005	809.43 MB	623.83 MB	n/a ▲	9.15
Fri Jan 21st, 2005	789.80 MB	563.81 MB	n/a ▲	8.92
Sat Jan 22nd, 2005	658.10 MB	676.35 MB	n/a ▼	7.44

Summary:

The total amount of bandwidth transferred during the selected week is **8.64 GB**.

The average amount of bandwidth transferred during a week is **1.24 GB**.

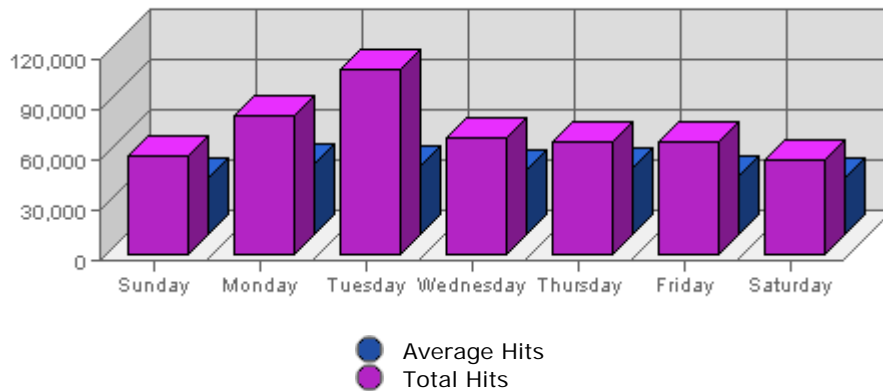
The smallest amount of bandwidth transferred occurred on **Sat, Jan 22nd 2005** with **658.10 MB** transferred.

The largest amount of bandwidth transferred occurred on **Tue, Jan 18th 2005** with **3.42 GB** transferred.

On average the smallest amount of bandwidth transferred occurs on **Friday** with **264.75 MB** transferred.

On average the largest amount of bandwidth transferred occurs on **Tuesday** with **348.52 MB** transferred.

Hits



Date	Hits	Average	Forecast	% of Total
Sun Jan 16th, 2005	59,745	34,615.53	n/a ▲	11.57
Mon Jan 17th, 2005	83,200	42,577.15	n/a ▲	16.11
Tue Jan 18th, 2005	111,393	41,175.31	n/a ▲	21.57
Wed Jan 19th, 2005	70,366	39,407.93	n/a ▲	13.62
Thu Jan 20th, 2005	67,259	39,639.00	n/a ▲	13.02
Fri Jan 21st, 2005	67,841	35,221.46	n/a ▲	13.14
Sat Jan 22nd, 2005	56,659	33,650.83	n/a ▲	10.97

Summary:

The total number of hits during the selected week is **516,463**.

The average number of hits during a week is **166,402.14**.

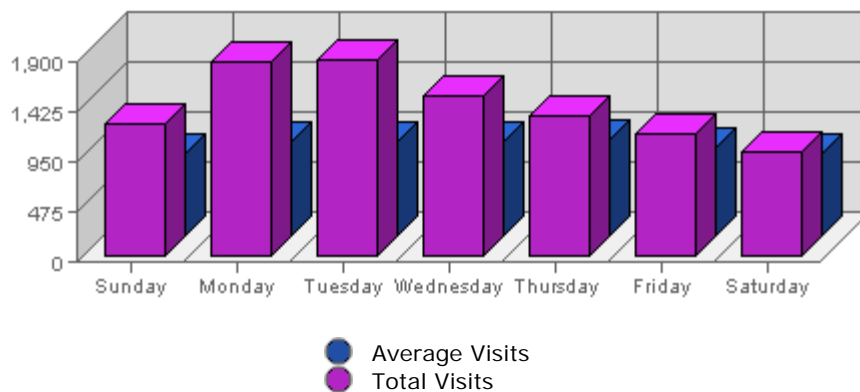
The smallest number of hits occurred on **Sat, Jan 22nd 2005** with **56,659** hits.

The largest number of hits occurred on **Tue, Jan 18th 2005** with **111,393** hits.

On average the smallest number of hits occurs on **Saturday** with **33,994.24** hits.

On average the largest number of hits occurs on **Monday** with **43,183.46** hits.

Visits



Date	Visits	Average	Forecast	% of Total
Sun Jan 16th, 2005	1,259	788.42	n/a ▲	12.56
Mon Jan 17th, 2005	1,844	906.42	n/a ▲	18.40
Tue Jan 18th, 2005	1,875	905.19	n/a ▲	18.71
Wed Jan 19th, 2005	1,534	902.03	n/a ▲	15.30
Thu Jan 20th, 2005	1,343	914.72	n/a ▼	13.40
Fri Jan 21st, 2005	1,174	839.74	n/a ▼	11.71
Sat Jan 22nd, 2005	994	790.27	n/a ▼	9.92

Summary:

The total number of visits during the selected week is **10,023**.
The average number of visits during a week is **3,779.36**.

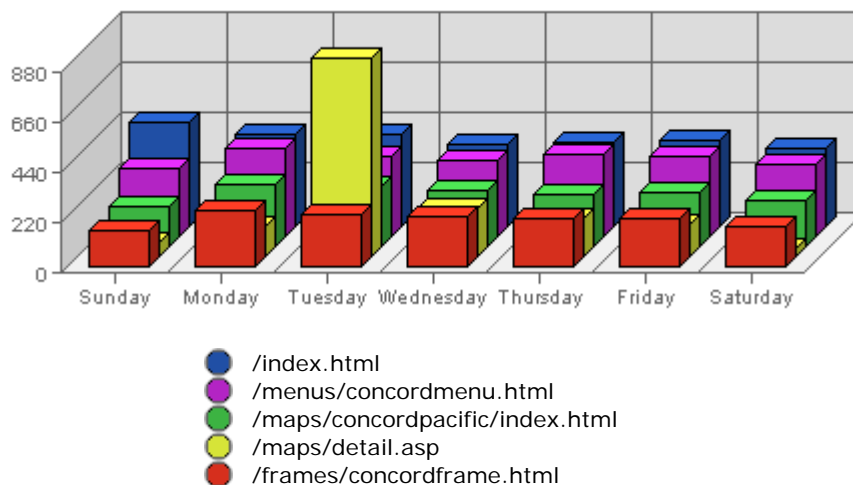
The smallest number of visits occurred on **Sat, Jan 22nd 2005** with **994** visits.
The largest number of visits occurred on **Tue, Jan 18th 2005** with **1,875** visits.

On average the smallest number of visits occurs on **Sunday** with **786.04** visits.
On average the largest number of visits occurs on **Thursday** with **921.01** visits.

Most Common Downloads

No Data Available for selected period

Most Common Page Views



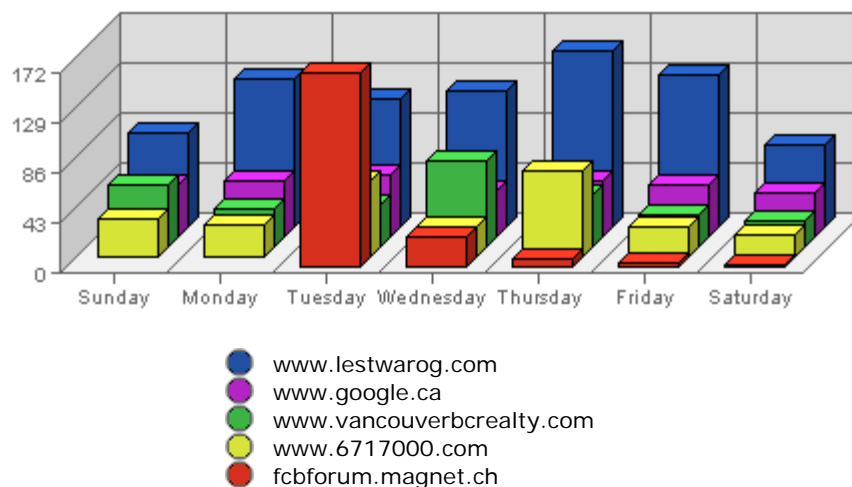
	URL	Hits	Average	Forecasted	% of Total
1.	/index.html	2,750	1,366.65	n/a ▲	4.12%
2.	/menus/concordmenu.html	2,444	881.30	n/a ▲	3.66%
3.	/maps/concordpacific/index.html	1,668	706.68	n/a ▲	2.50%
4.	/maps/detail.asp	1,644	172.37	n/a ▲	2.46%

5.	/frames/concordframe.html	1,475	523.63	n/a ▲	2.21%
6.	/map.html	1,426	148.72	n/a ▲	2.14%
7.	/menus/mapsmenu.html	1,390	137.31	n/a ▲	2.08%
8.	/frames/mapsframe.html	1,373	139.67	n/a ▲	2.06%
9.	/maps/coalharbour/index.html	701	380.44	n/a ▲	1.05%
10.	/frames/coalframe.html	639	277.79	n/a ▲	0.96%

Summary:

- During the selected week, **8,468** distinct pages are responsible for **66,717** page views. (Averaging **7.88** views per page)
- During the previous week, **4,494** distinct pages were responsible for **46,326** page views. (Averaging **10.31** views per page)
- During the selected week there are **8,468** distinct pages. During the previous week there were **4,494** distinct pages. This is a change of **3,974 (+88.43%)** distinct pages.
- During the selected week there are **66,717** page views. During the previous week there were **46,326** page views. This is a change of **20,391 (+44.02%)** page views.
- The selected week's average (**7.88** views per page) is **down** by **2.43 (-23.57%)** from last week's average (**10.31** views per page).
- **14.03%** of all pages were viewed more than the average (**7.88** views per page), and **85.97%** were viewed less.
- Your top page accounts for **2,750** page views, **4.12%** of all page views.
- **2,593** pages (**30.62%** of all pages) recorded only 1 page view.

Most Common Referring Sites



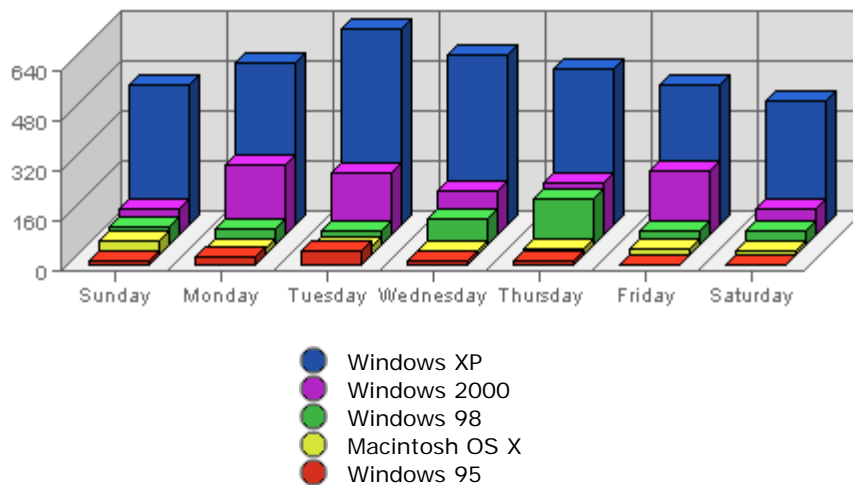
Referring Site	Referrals	Average	Forecasted	% of Total
1. www.lestwarog.com	794	159.47	n/a ▲	25.08%
2. www.google.ca	323	77.73	n/a ▼	10.20%
3. www.vancouverbcrealty.com	296	82.82	n/a ▼	9.35%
4. www.6717000.com	274	75.66	n/a ▼	8.65%

5.	fcforum.magnet.ch	209	1.94	n/a	■	6.60%
6.	search.msn.com	174	21.63	n/a	▲	5.50%
7.	www.google.com	107	32.06	n/a	▲	3.38%
8.	luxury.phototours.net	96	23.31	n/a	▼	3.03%
9.	search.yahoo.com	88	33.55	n/a	▲	2.78%
10.	ca.search.yahoo.com	53	16.45	n/a	▲	1.67%

Summary:

- During the selected week, **166** distinct referrers are responsible for **3,166** visits. (Averaging **19.07** visits per referrer)
- During the previous week, **156** distinct referrers were responsible for **2,936** visits. (Averaging **18.82** visits per referrer)
- During the selected week there are **166** distinct referrers. During the previous week there were **156** distinct referrers. This is a change of **10 (+6.41%)** distinct referrers.
- During the selected week there are **3,166** referred visits. During the previous week there were **2,936** referred visits. This is a change of **230 (+7.83%)** visits.
- The selected week's average (**19.07** visits per referring site) is **up** by **0.25 (+1.33%)** from last week's average (**18.82** visits per referring site).
- **12.05%** of all referrers provided more visits than the average (**19.07** visits per referrer), and **87.95%** provided less.
- Your top referrer accounts for **794** referred visits, **25.08%** of all referred visits.
- **79** referrers (**47.59%** of all referrers) referred only 1 visit.

Most Common Browser Operating Systems



	Operating System	Visits	Average	Forecasted	% of Total
1.	Windows XP	3,504	1,465.94	n/a ▲	60.89%
2.	Windows 2000	1,117	449.81	n/a ▲	19.41%
3.	Windows 98	502	343.31	n/a ▲	8.72%
4.	Macintosh OS X	177	52.87	n/a ▼	3.08%

5.	Windows 95	136	25.16	n/a ▲	2.36%
6.	Windows ME	107	117.45	n/a ▲	1.86%
7.	Macintosh PPC	81	51.09	n/a ▼	1.41%
8.	Windows NT	55	38.26	n/a ▼	0.96%
9.	Linux	36	43.31	n/a ▼	0.63%
10.	Windows 2003	35	6.59	n/a ▼	0.61%

Summary:

- During the selected week, **12** distinct browser operating systems are seen in **5,755** visits.
(Averaging **479.58** visits per browser operating system)
- During the previous week, **12** distinct browser operating systems were seen in **5,458** visits.
(Averaging **454.83** visits per browser operating system)
- During the selected week there are visits from **12** distinct browser operating systems.
During the previous week there were visits from **12** distinct browser operating systems.
This is a change of **(0.00%)** distinct browser operating systems.
- During the selected week there are **5,755** visits with identifiable browser operating systems.
During the previous week there were **5,458** visits with identifiable browser operating systems.
This is a change of **297 (+5.44%)** visits.
- The selected week's average (**479.58** visits per browser operating system) is **up** by **24.75 (+5.44%)** from last week's average (**454.83** visits per browser operating system).
- **25.00%** of all browser operating systems are present in more than the average (**479.58** visits per browser operating system), and **75.00%** are present in less.
- Your top browser operating system accounts for **3,504** visits, **60.89%** of all visits.
- **0** browser operating systems (**0.00%** of all browser operating systems) recorded only 1 visit.