

Penthouse 1

Two Bedroom

Total Living 4670 sf | Indoor Living 2334 sf | Outdoor Living 2336 sf

From the moment you open the door, unobstructed views of Granville Island and False Creek will take your breath away. The Boffi chef's kitchen features Miele appliances and the custom BIG-designed Corian island are perfect for entertaining guests. The master bedroom features a marble clad five-piece ensuite and a spacious dressing room. The private hot tub and roof terrace offer a tranquil retreat from the city.



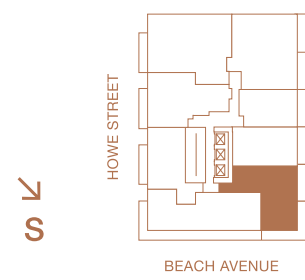
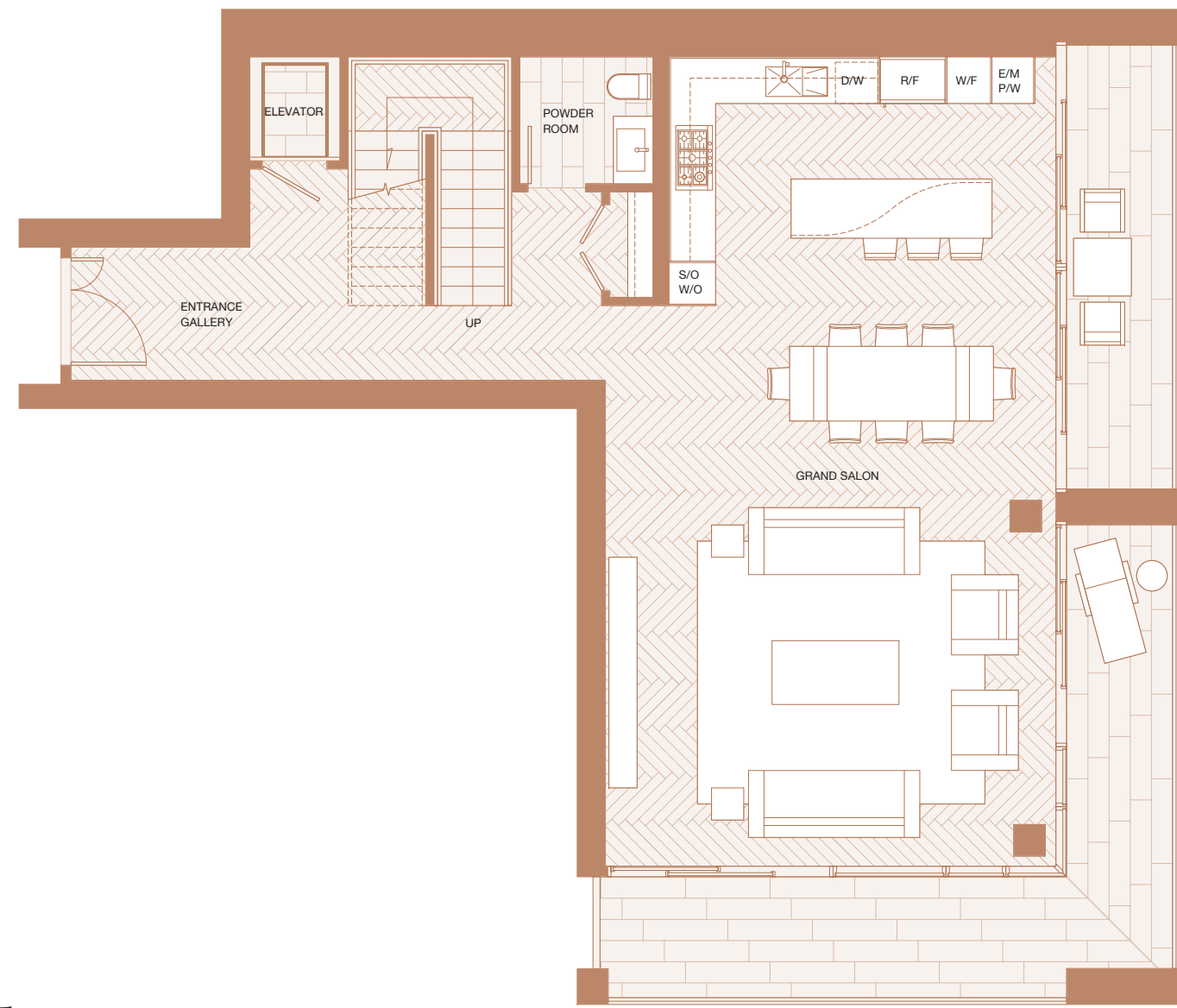
OPTIONAL SKYLIGHT SHOWN IN RENDERING. DIMENSIONS, SIZES, SPECIFICATIONS, LAYOUTS AND MATERIALS ARE APPROXIMATE ONLY AND SUBJECT TO CHANGE WITHOUT NOTICE. E.&O.E.

VANCOUVER
HOUSE

PENTHOUSE 1

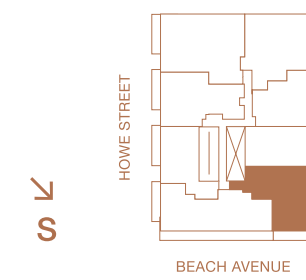
Lower Floor

Indoor Living 1182 sf
Outdoor Living 364 sf



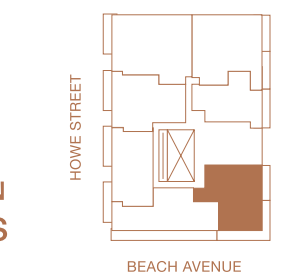
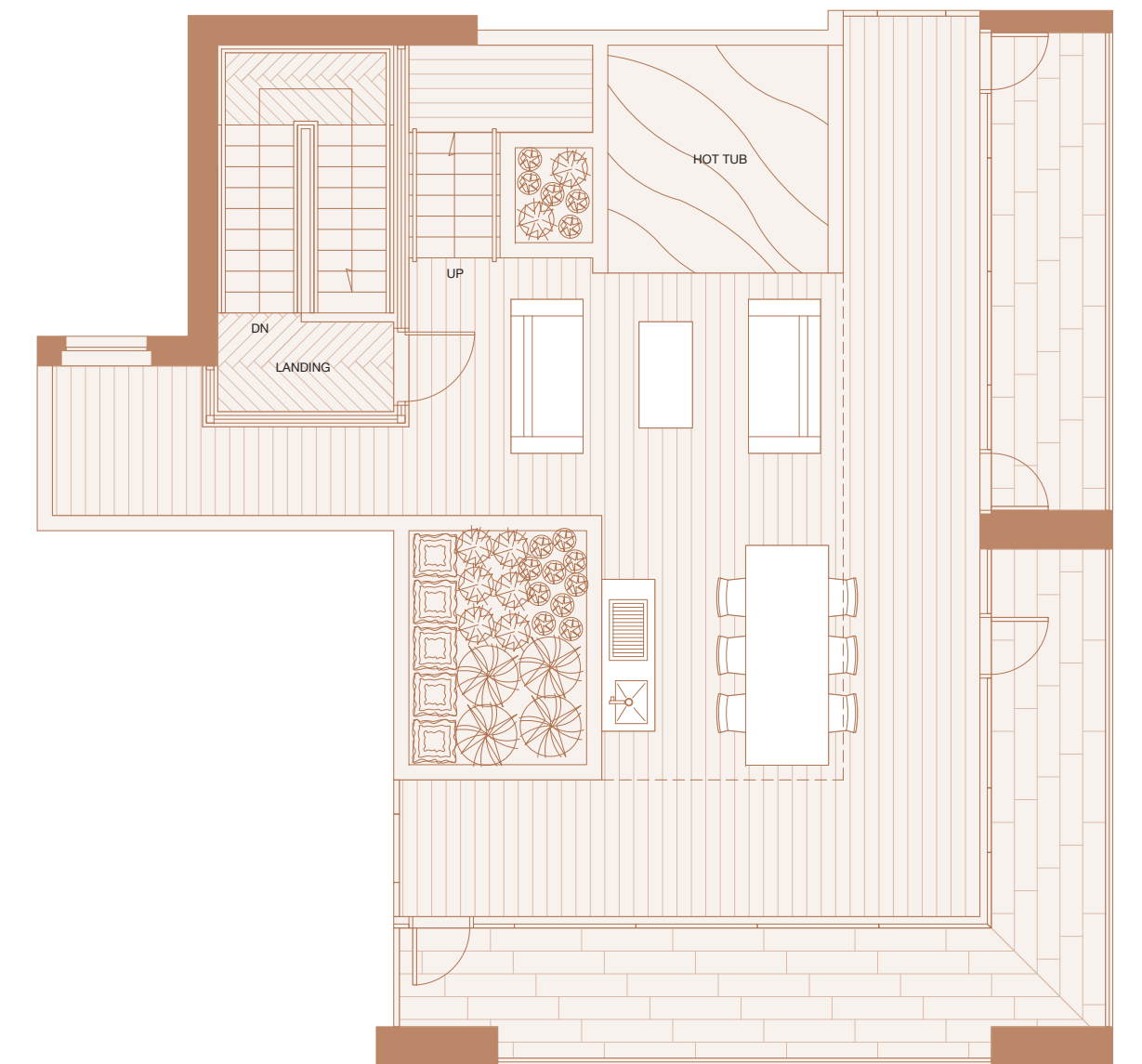
Upper Floor

Indoor Living 1158 sf
Outdoor Living 369 sf



Roof Terrace

Outdoor Living 1603 sf

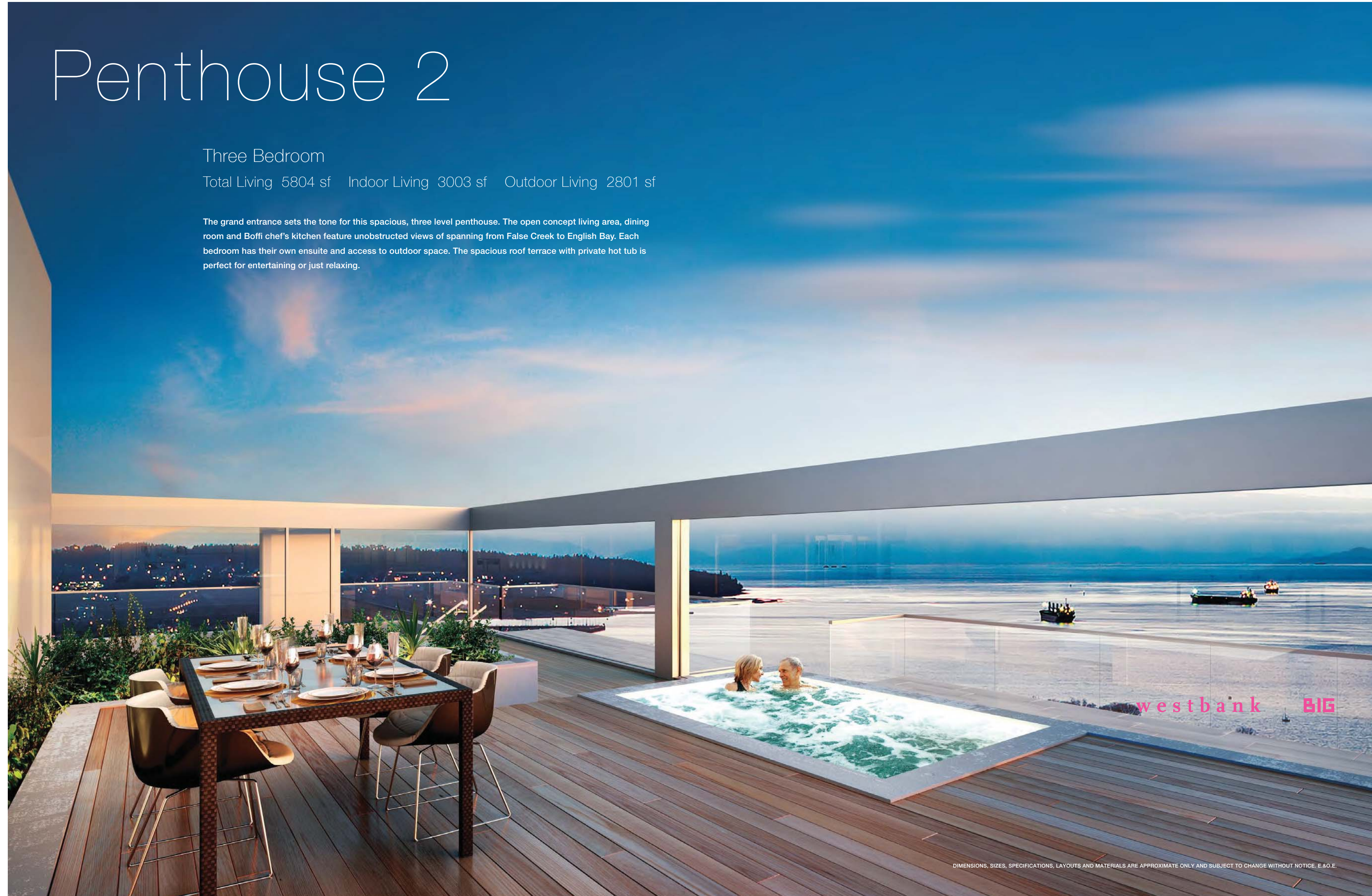


Penthouse 2

Three Bedroom

Total Living 5804 sf Indoor Living 3003 sf Outdoor Living 2801 sf

The grand entrance sets the tone for this spacious, three level penthouse. The open concept living area, dining room and Boffi chef's kitchen feature unobstructed views of spanning from False Creek to English Bay. Each bedroom has their own ensuite and access to outdoor space. The spacious roof terrace with private hot tub is perfect for entertaining or just relaxing.



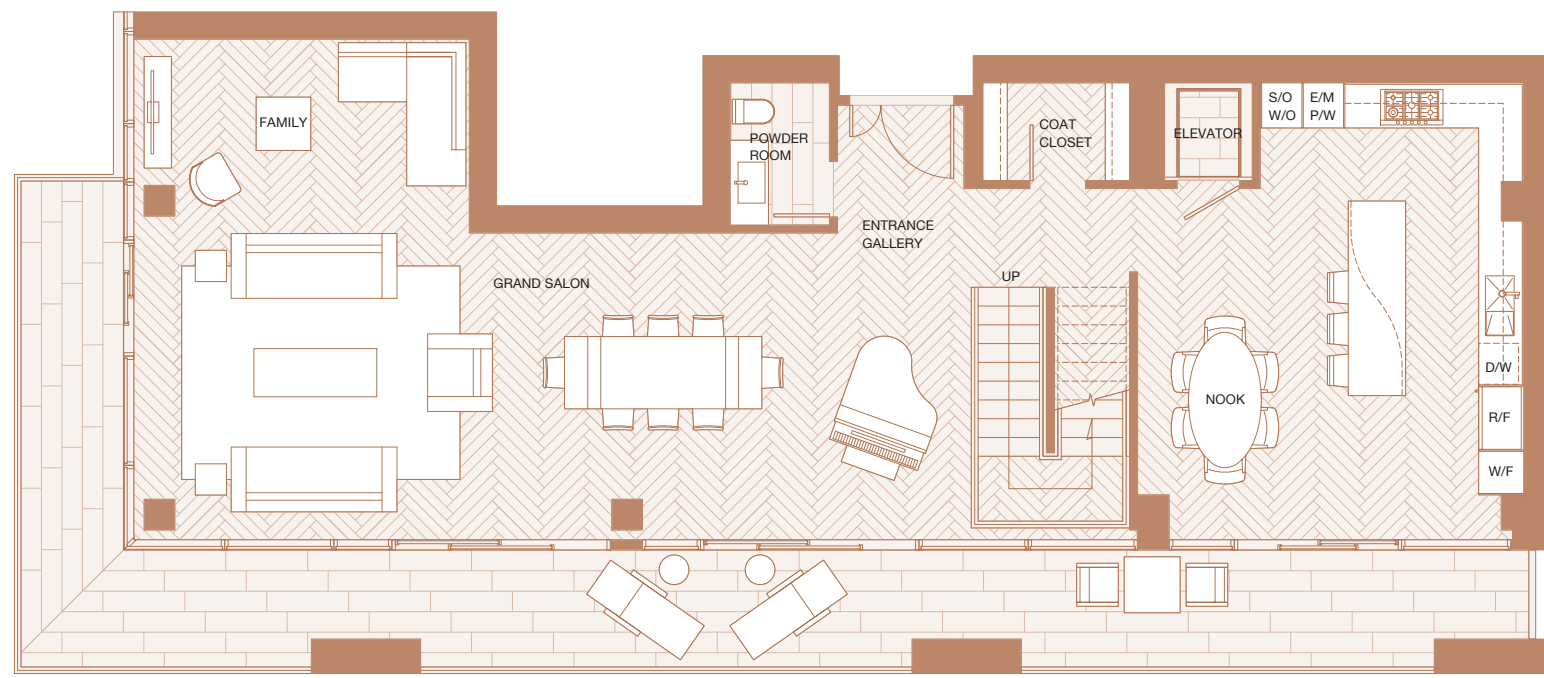
DIMENSIONS, SIZES, SPECIFICATIONS, LAYOUTS AND MATERIALS ARE APPROXIMATE ONLY AND SUBJECT TO CHANGE WITHOUT NOTICE. E.&O.E.

VANCOUVER
HOUSE

PENTHOUSE 2

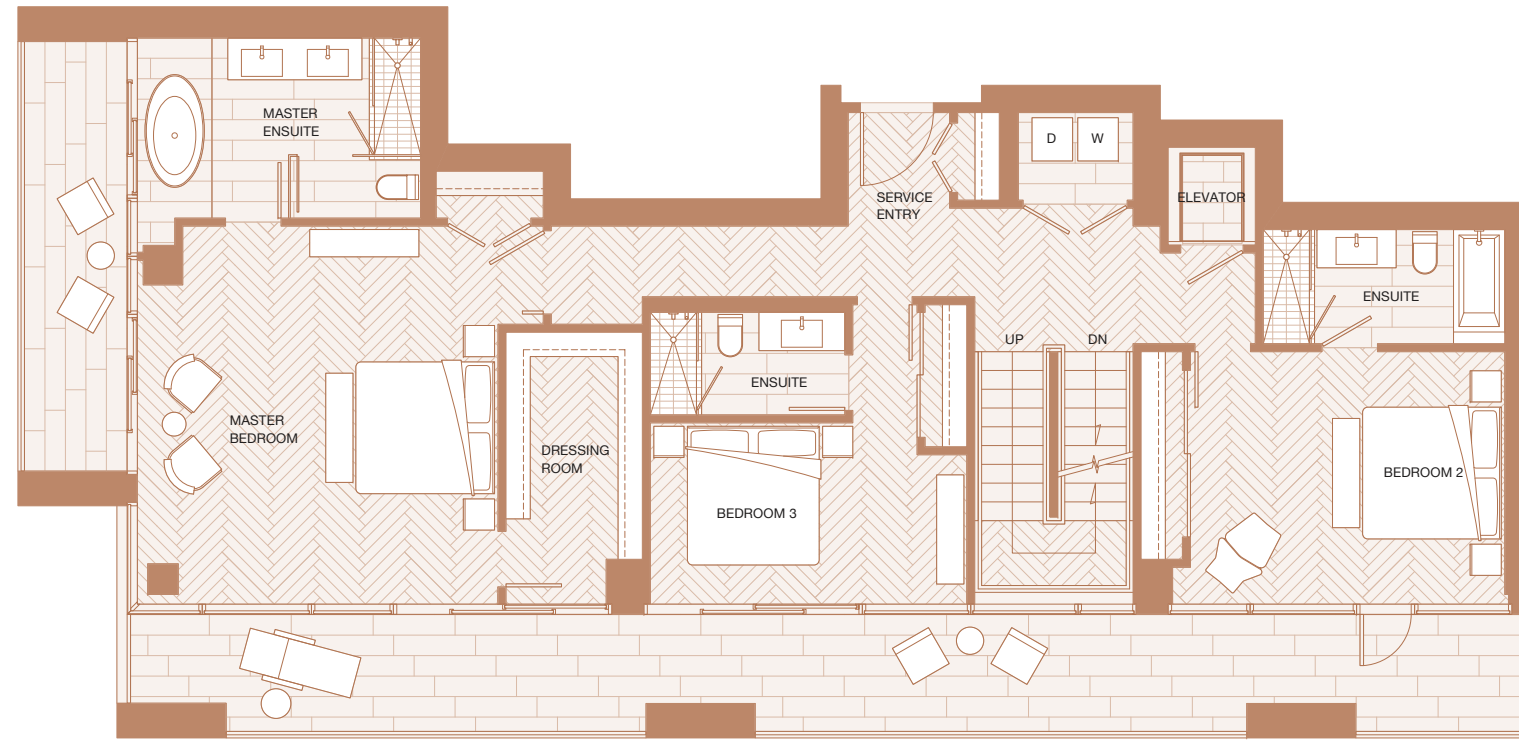
Lower Floor

Indoor Living 1487 sf
Outdoor Living 580 sf



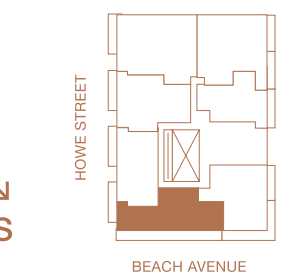
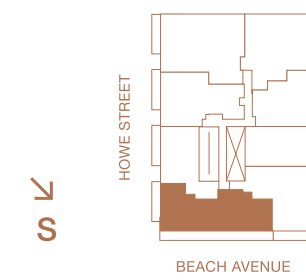
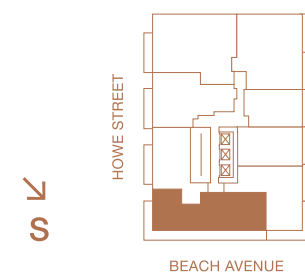
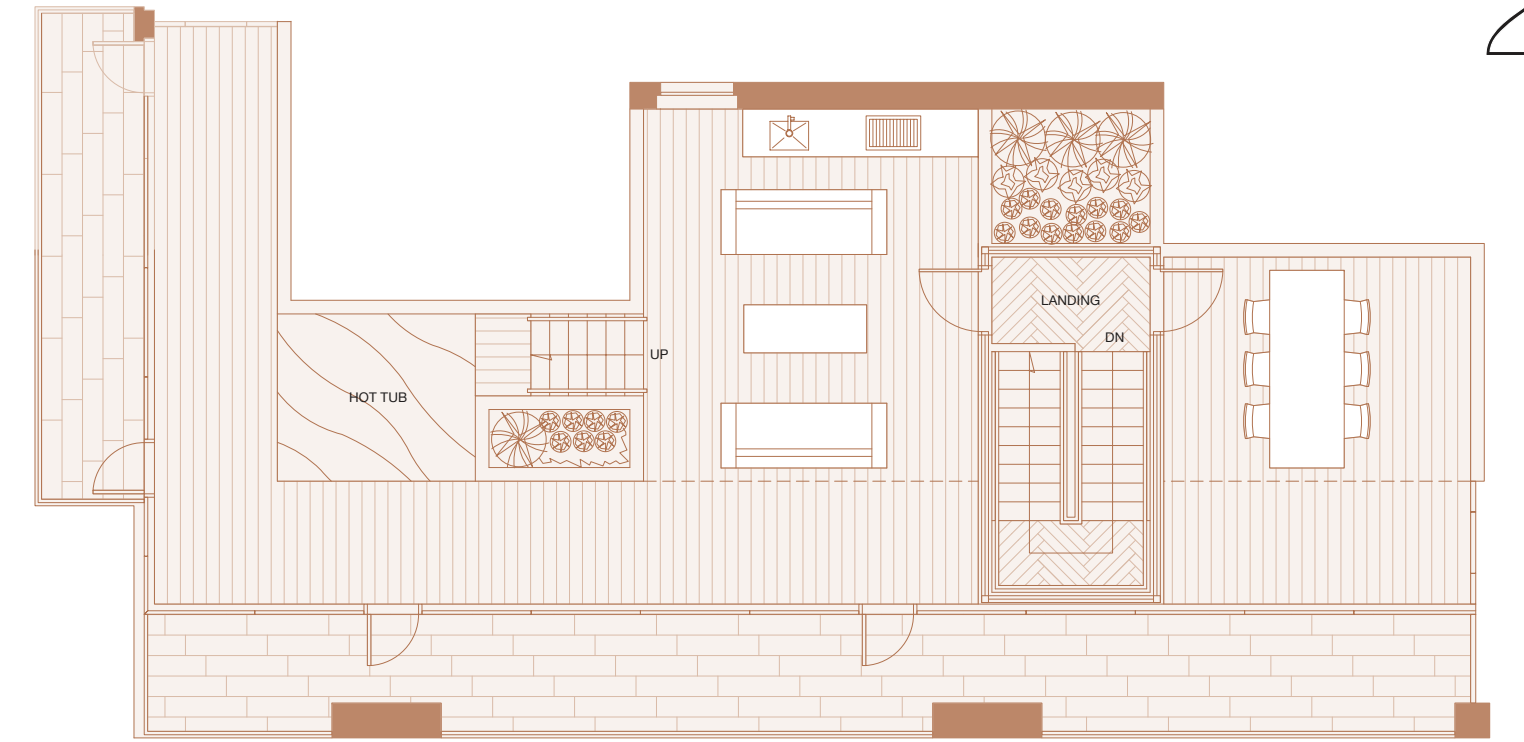
Upper Floor

Indoor Living 1516 sf
Outdoor Living 529 sf



Roof Terrace

Outdoor Living 1742 sf



Penthouse 3

Two Bedroom

Total Living 3477 sf | Indoor Living 2058 sf | Outdoor Living 1419 sf

This luxurious Penthouse home features a desirable Boffi chef's kitchen with Miele appliances and custom BIG-designed Corian island. Situated on the highest floors of Vancouver House, panoramic views of English Bay are seen from every floor to ceiling window. The luxurious marble clad five-piece ensuite and spacious dressing room will make your closet feel like your favourite boutique.



westbank BIG

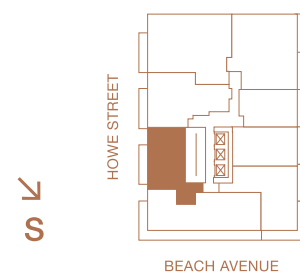
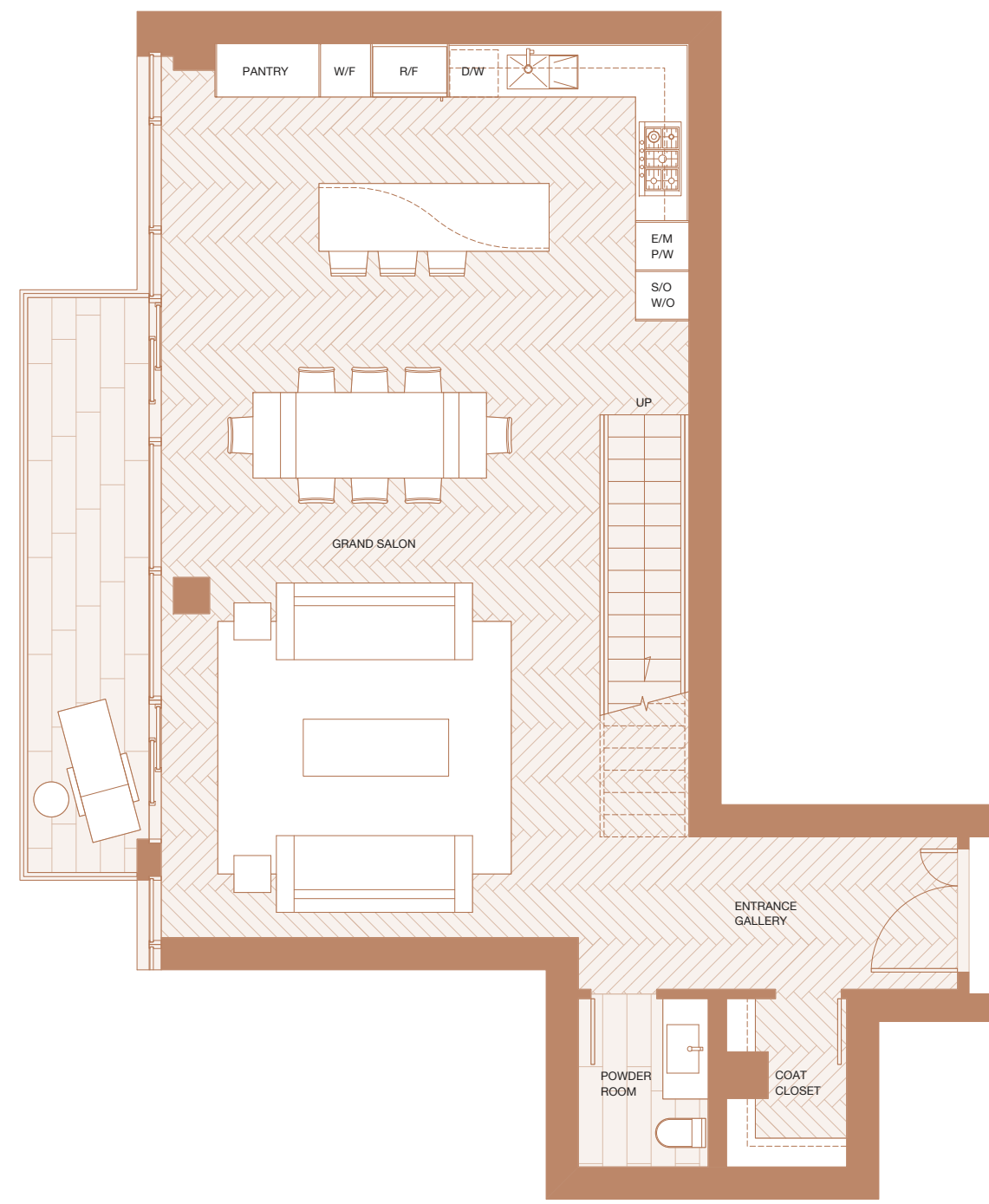
OPTIONAL SKYLIGHT SHOWN IN RENDERING. DIMENSIONS, SIZE, SPECIFICATIONS, LAYOUTS AND MATERIALS ARE APPROXIMATE ONLY AND SUBJECT TO CHANGE WITHOUT NOTICE. E.&O.E.

VANCOUVER
HOUSE

PENTHOUSE 03

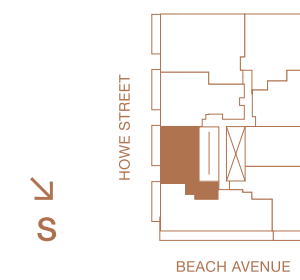
Lower Floor

Indoor Living 1058 sf
Outdoor Living 126 sf



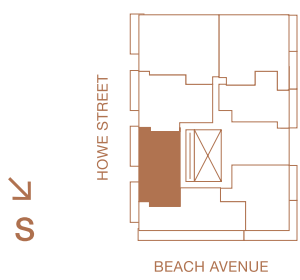
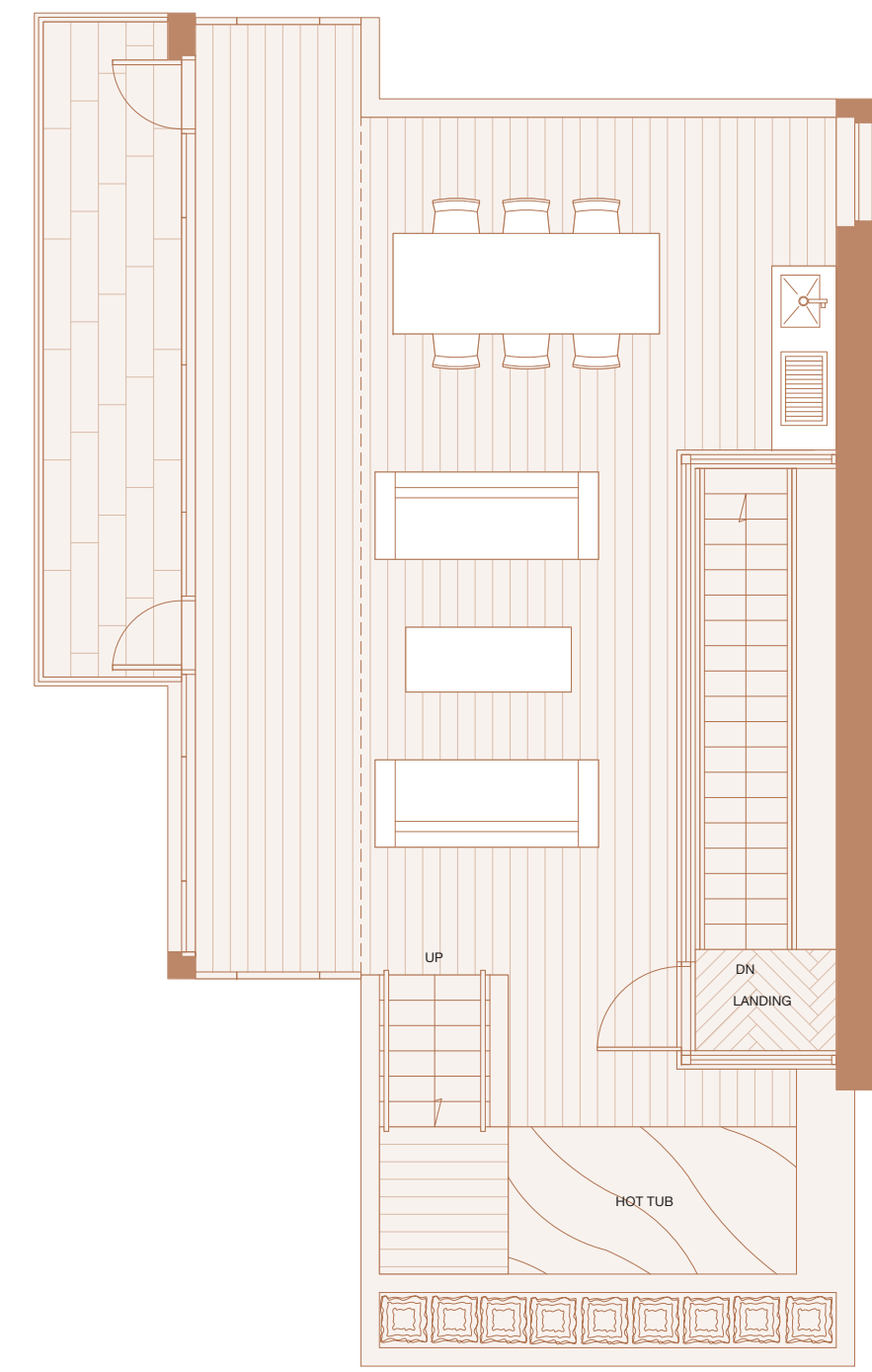
Upper Floor

Indoor Living 1000 sf
Outdoor Living 126 sf



Roof Terrace

Outdoor Living 1167 sf



Penthouse 5

Two bedroom and Library

Total Living 4206 sf Indoor Living 2555 sf Outdoor Living 1651 sf

The gallery entrance leads to sweeping views of English Bay accompanied by the open concept Boffi chef's kitchen and living area. Each bedroom features their own ensuite and the second level houses a private library perfect for studying and relaxing. The spacious roof terrace has a hot tub and is the perfect getaway from the city in your own home.



westbank BIG

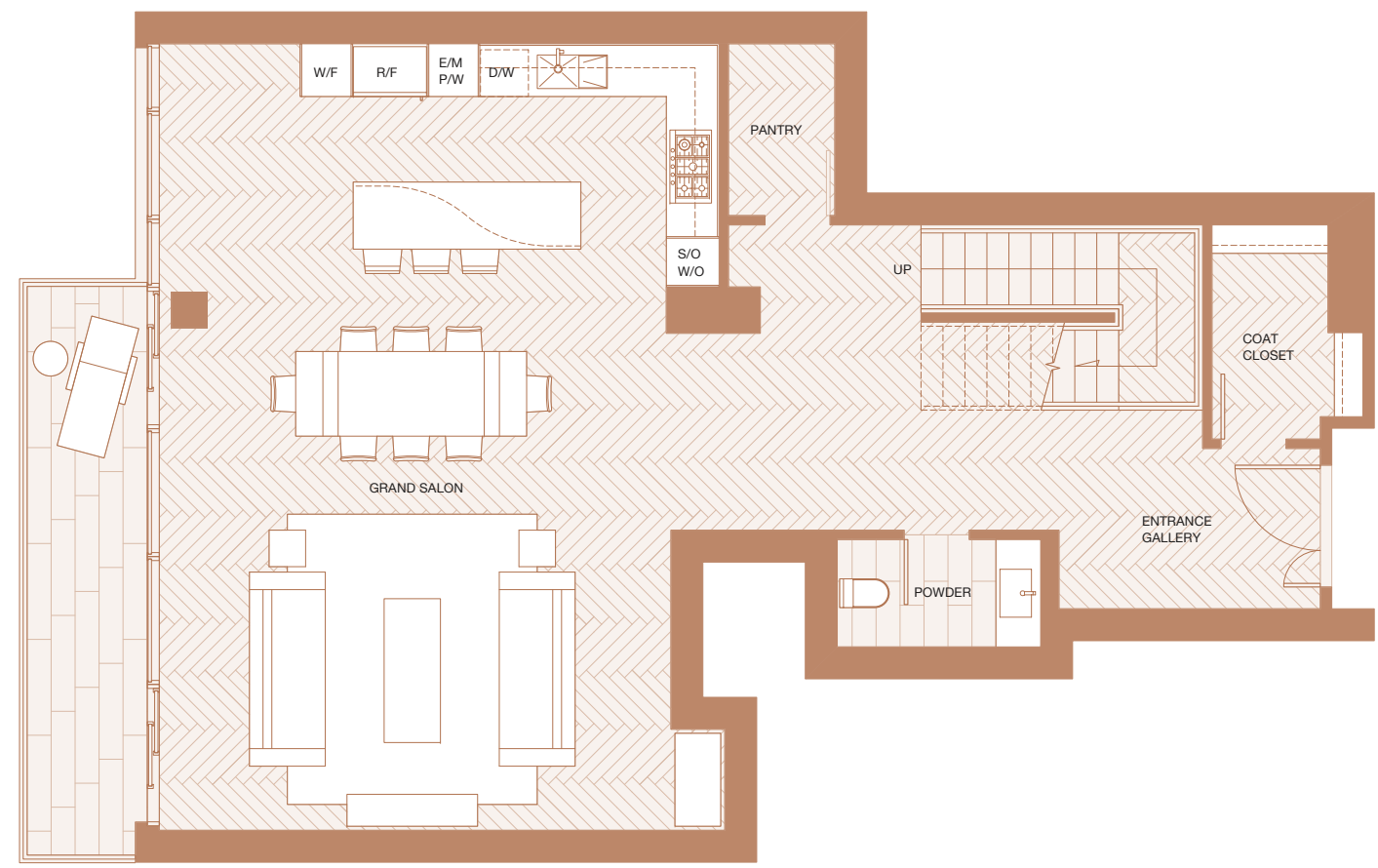
OPTIONAL SKYLIGHT SHOWN IN RENDERING. DIMENSIONS, SIZE, SPECIFICATIONS, LAYOUTS AND MATERIALS ARE APPROXIMATE ONLY AND SUBJECT TO CHANGE WITHOUT NOTICE. E.&O.E.

VANCOUVER
HOUSE

PENTHOUSE 5

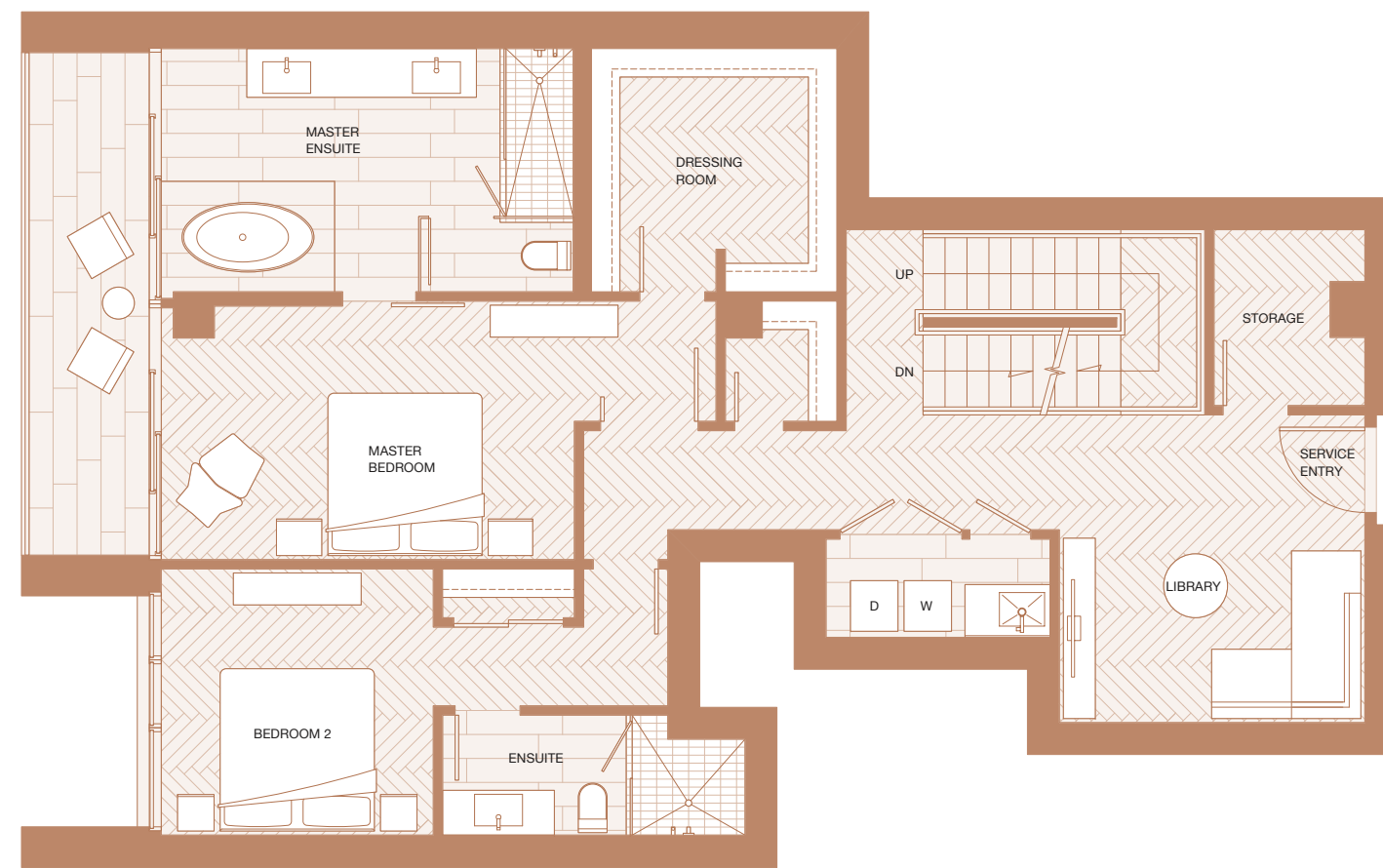
Lower Floor

Indoor Living 1232 sf
Outdoor Living 126 sf



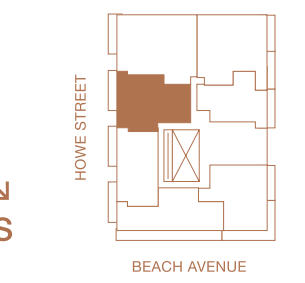
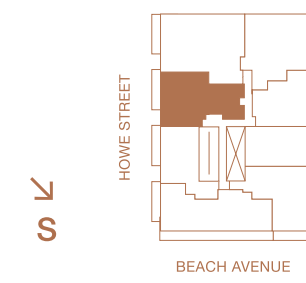
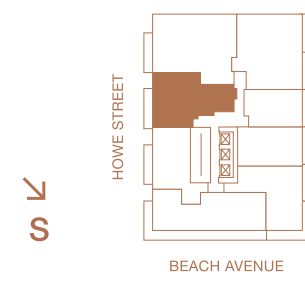
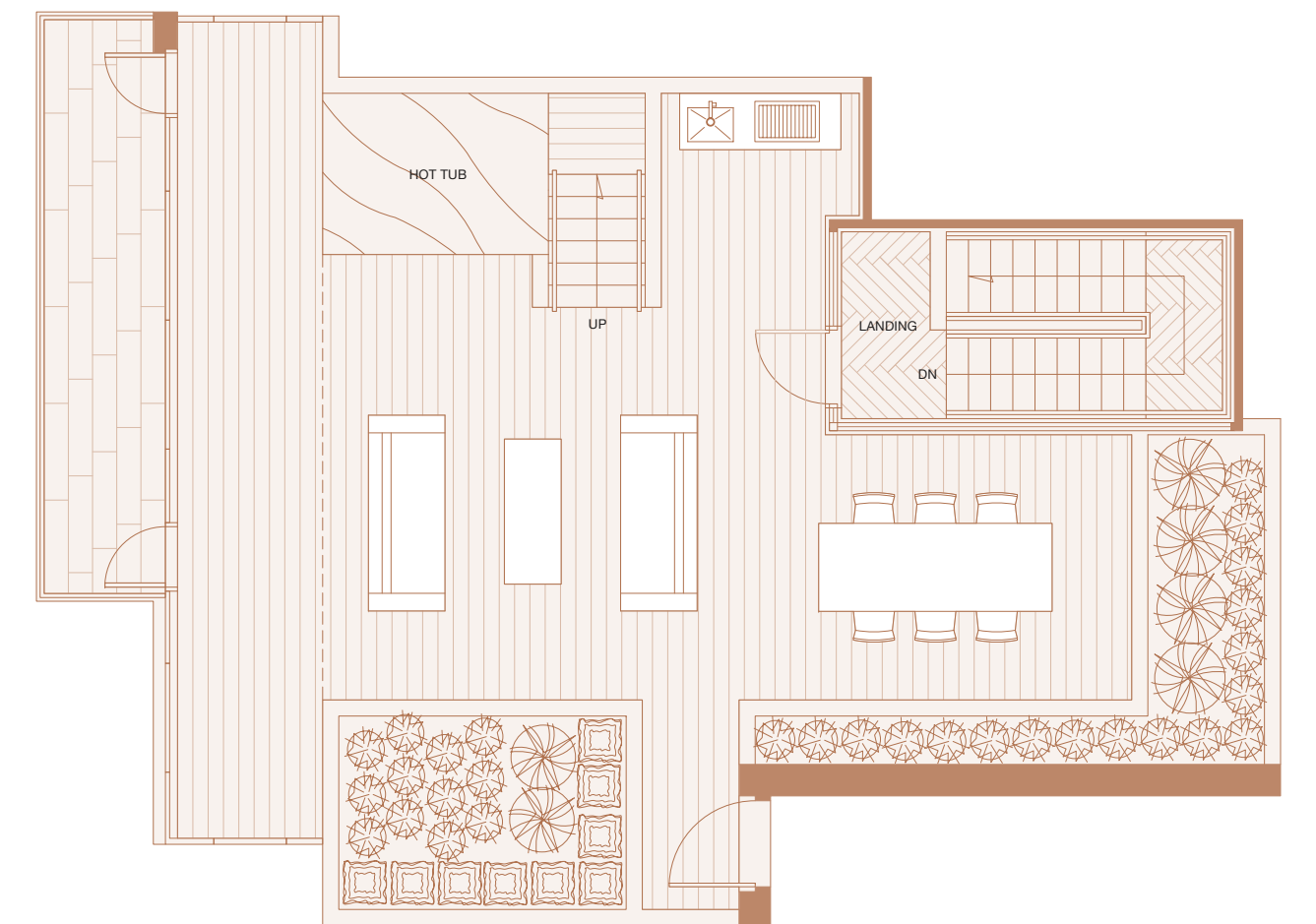
Upper Floor

Indoor Living 1323 sf
Outdoor Living 126 sf



Roof Terrace

Outdoor Living 1399 sf



Penthouse 6

Three Bedroom

Total Living 5837 sf | Indoor Living 3676 sf | Outdoor Living 2161 sf

The versatile, open concept layout of this stylish home features a custom Fazioli piano in the grand salon, Boffi chef's kitchen with Miele appliances and custom BIG-designed Corian island. The elevator leads to the second level where the master bedroom features his and hers dressing rooms and a deluxe marble clad five-piece ensuite. The hot tub is the centrepiece of the roof terrace and offers unobstructed views of English Bay and the downtown Vancouver skyline.



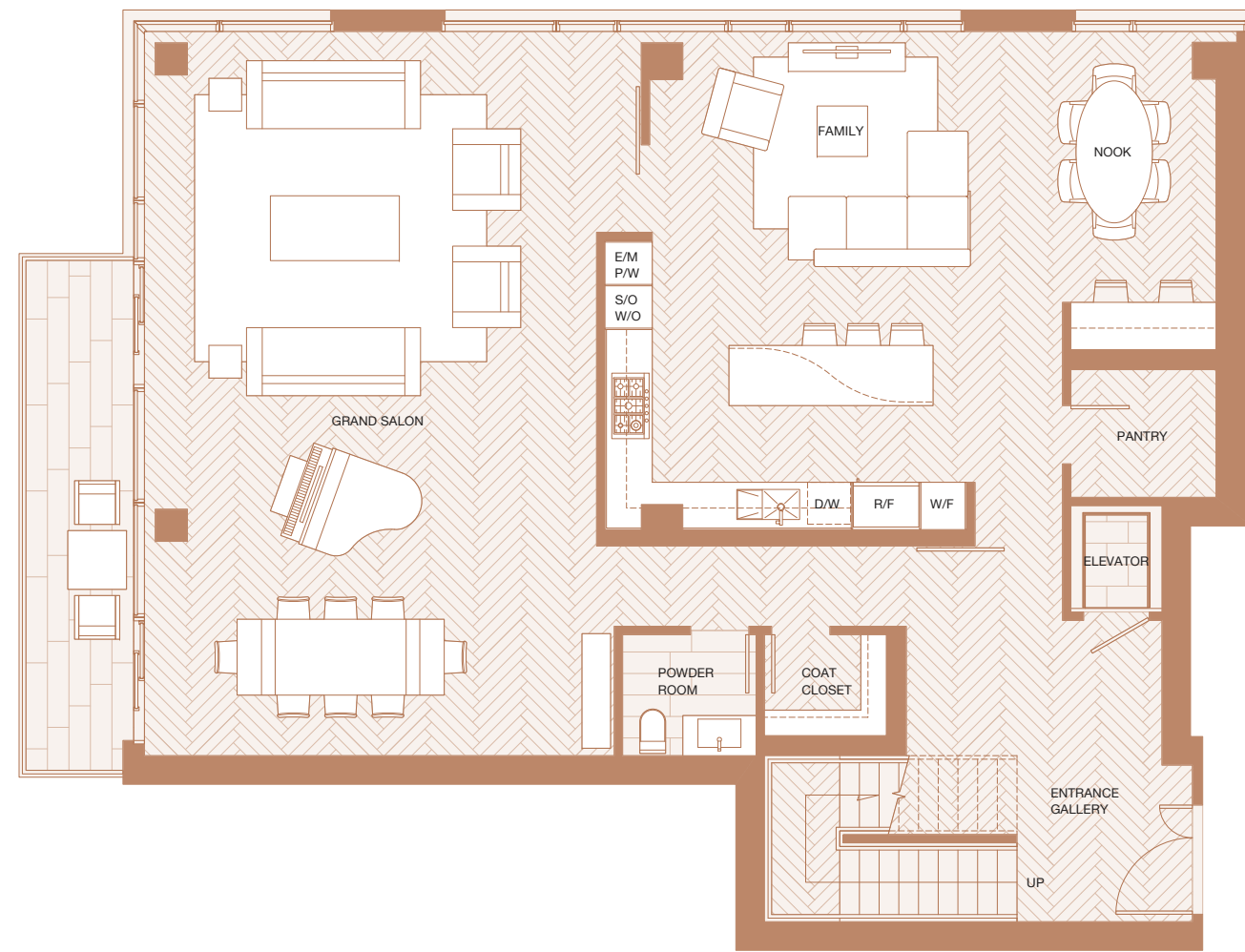
DIMENSIONS, SIZES, SPECIFICATIONS, LAYOUTS AND MATERIALS ARE APPROXIMATE ONLY AND SUBJECT TO CHANGE WITHOUT NOTICE. E.&O.E.

VANCOUVER
HOUSE

PENTHOUSE CO

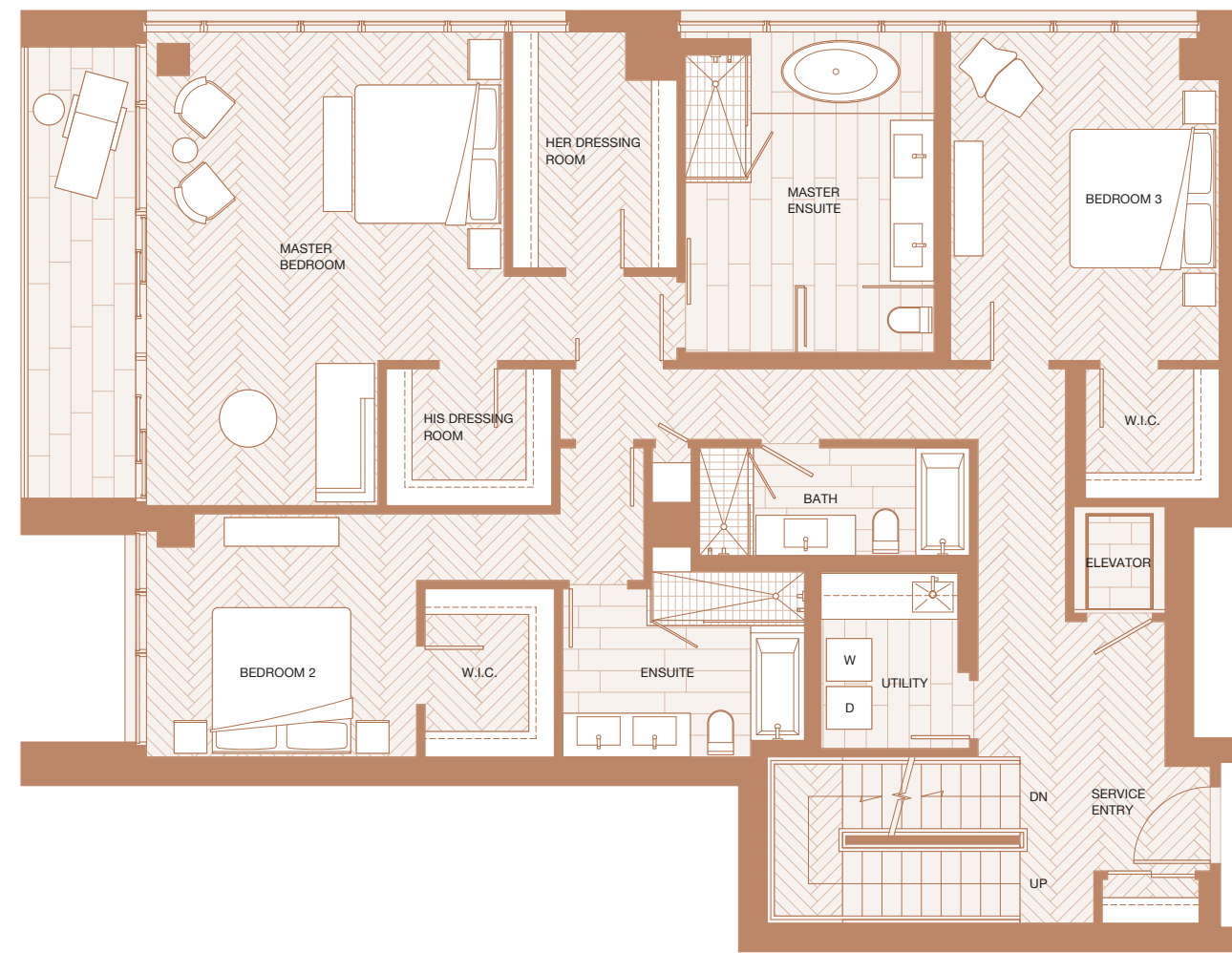
Lower Floor

Indoor Living 1836 sf
Outdoor Living 126 sf



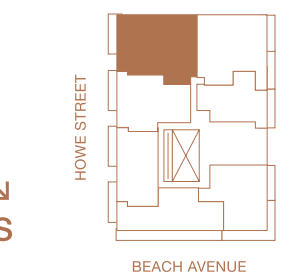
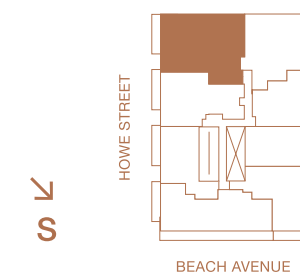
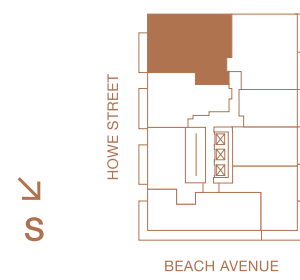
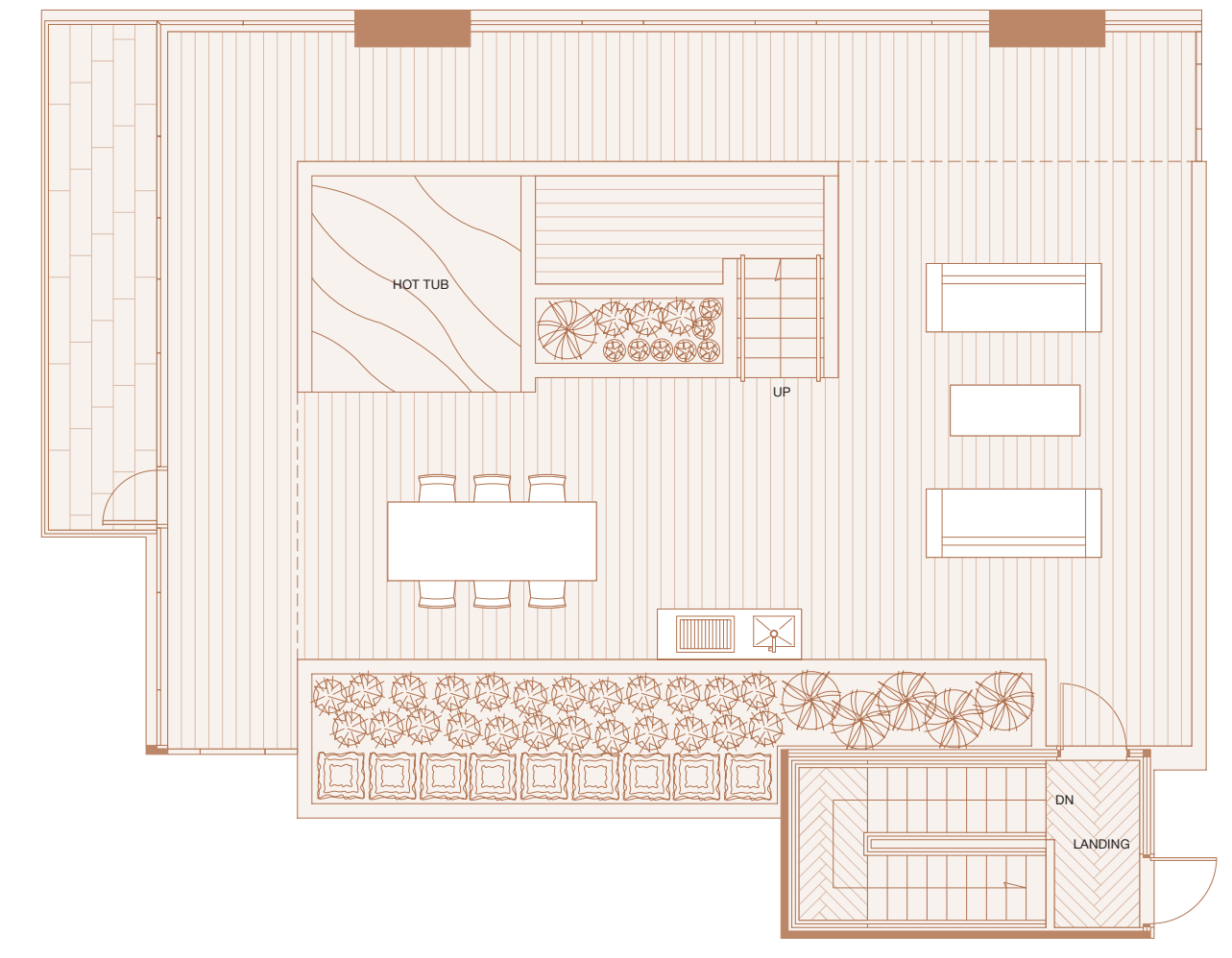
Upper Floor

Indoor Living 1840 sf
Outdoor Living 126 sf



Roof Terrace

Outdoor Living 1909 sf



Penthouse 7

3 Bedrooms

Total Living 5551 sf Indoor Living 3252 sf Outdoor Living 2299 sf

The custom Fazioli piano in the grand salon is the centrepiece of this stunning home. Thoughtfully laid out floor plans maximize space and the floor to ceiling windows showcase panoramic views of downtown Vancouver and Mount Baker. The dressing room in the master bedroom feels like your own private boutique and the marble clad five-piece ensuite resembles a spa retreat.



westbank BIG

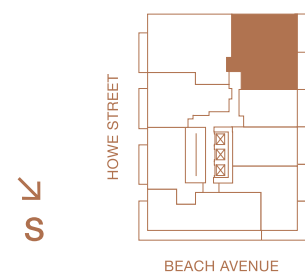
OPTIONAL SKYLIGHT SHOWN IN RENDERING. DIMENSIONS, SIZES, SPECIFICATIONS, LAYOUTS AND MATERIALS ARE APPROXIMATE ONLY AND SUBJECT TO CHANGE WITHOUT NOTICE. E.&O.E.

VANCOUVER
HOUSE

PENTHOUSE 7

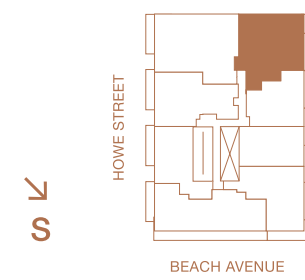
Lower Floor

Indoor Living 1731 sf
Outdoor Living 237 sf



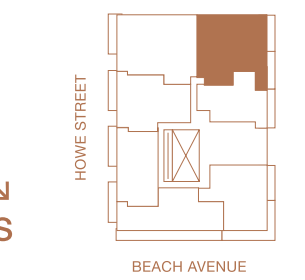
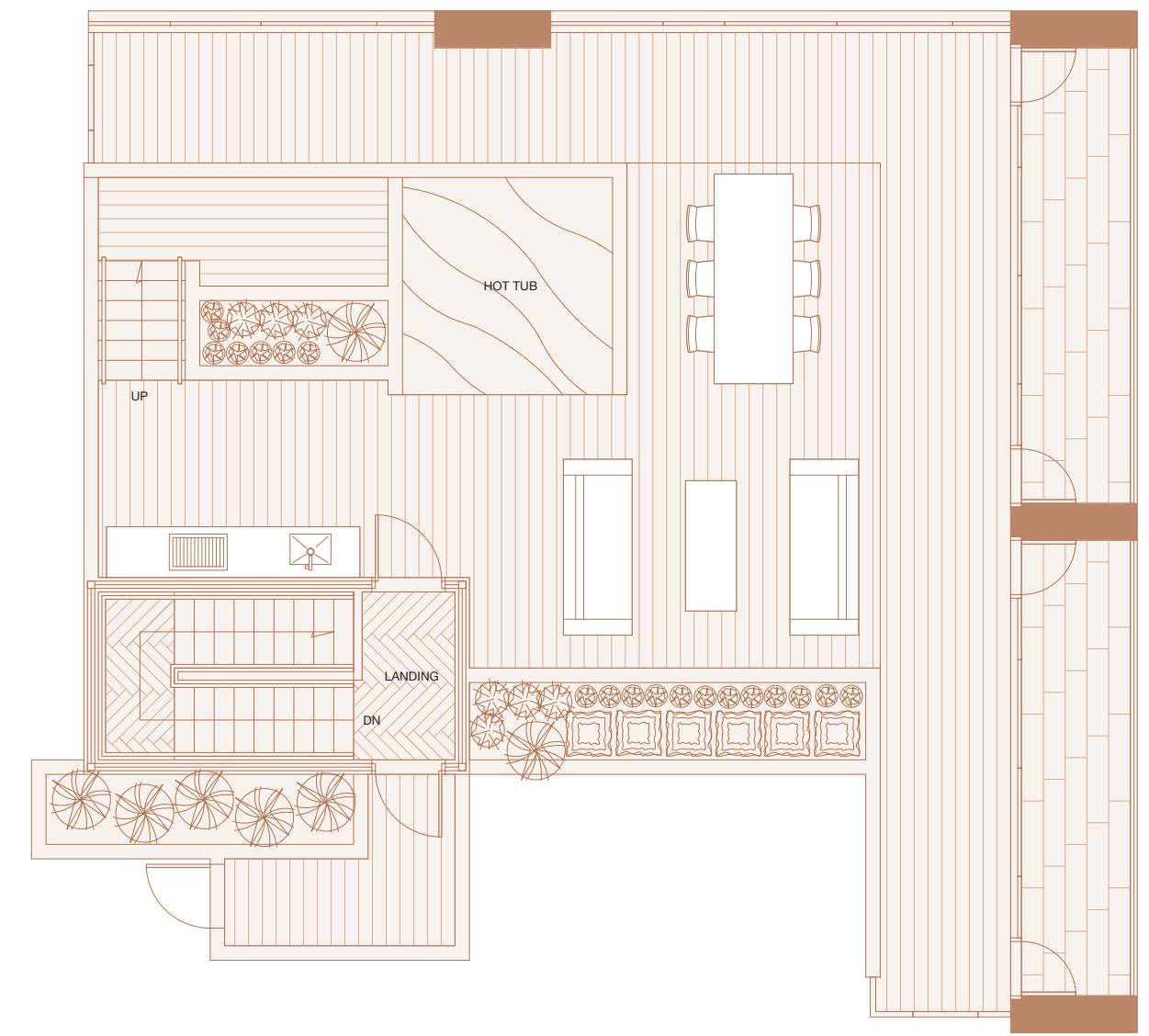
Upper Floor

Indoor Living 1521 sf
Outdoor Living 180 sf



Roof Terrace

Outdoor Living 1882 sf



Penthouse 8

Two Bedroom

Total Living 3120 sf | Indoor Living 1739 sf | Outdoor Living 1381 sf

Situated on the highest floors of Vancouver House, floor to ceiling windows boast unobstructed views of False Creek and Mount Baker. The open concept living area and chef's kitchen offer access to the outdoor terrace and are perfect for entertaining. The master bedroom features a deluxe clad marble five-piece ensuite and spacious dressing room. The expansive roof terrace is the focal point of this home with a private hot tub that will make you feel far away from the city.



westbank BIG

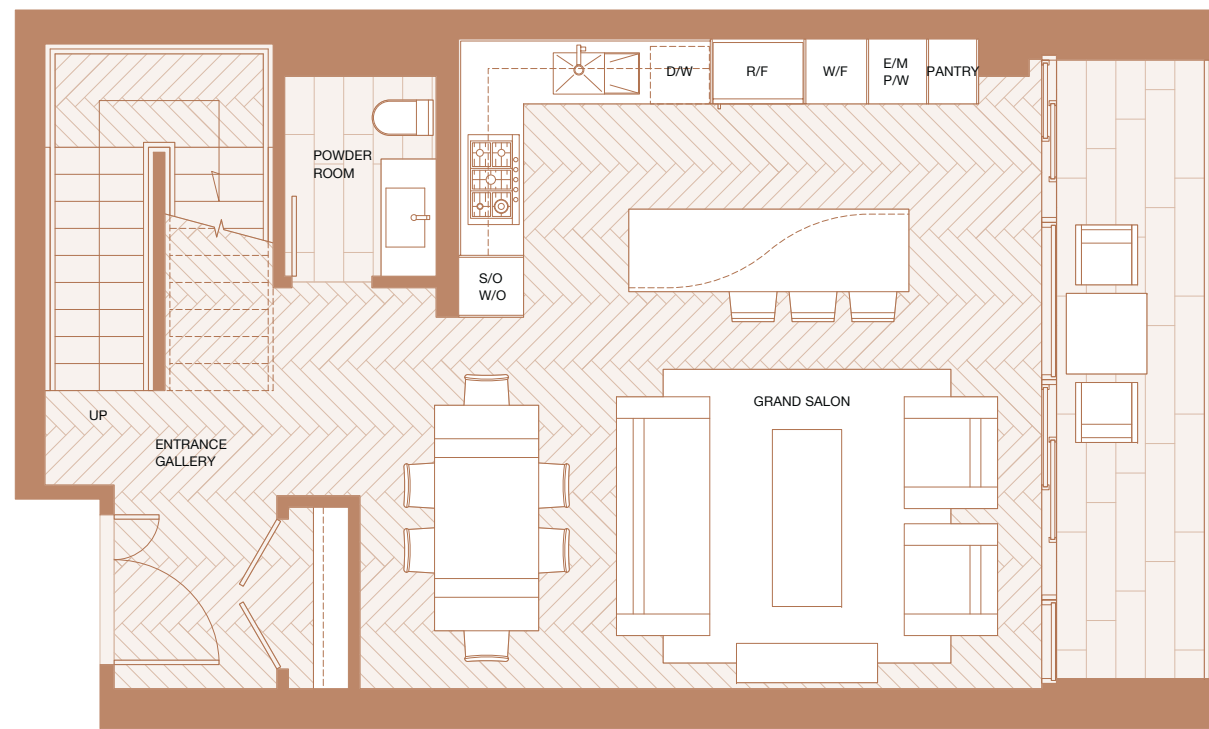
OPTIONAL SKYLIGHT SHOWN IN RENDERING. DIMENSIONS, SIZES, SPECIFICATIONS, LAYOUTS AND MATERIALS ARE APPROXIMATE ONLY AND SUBJECT TO CHANGE WITHOUT NOTICE. E.&O.E.

VANCOUVER
HOUSE

PENTHOUSE 00

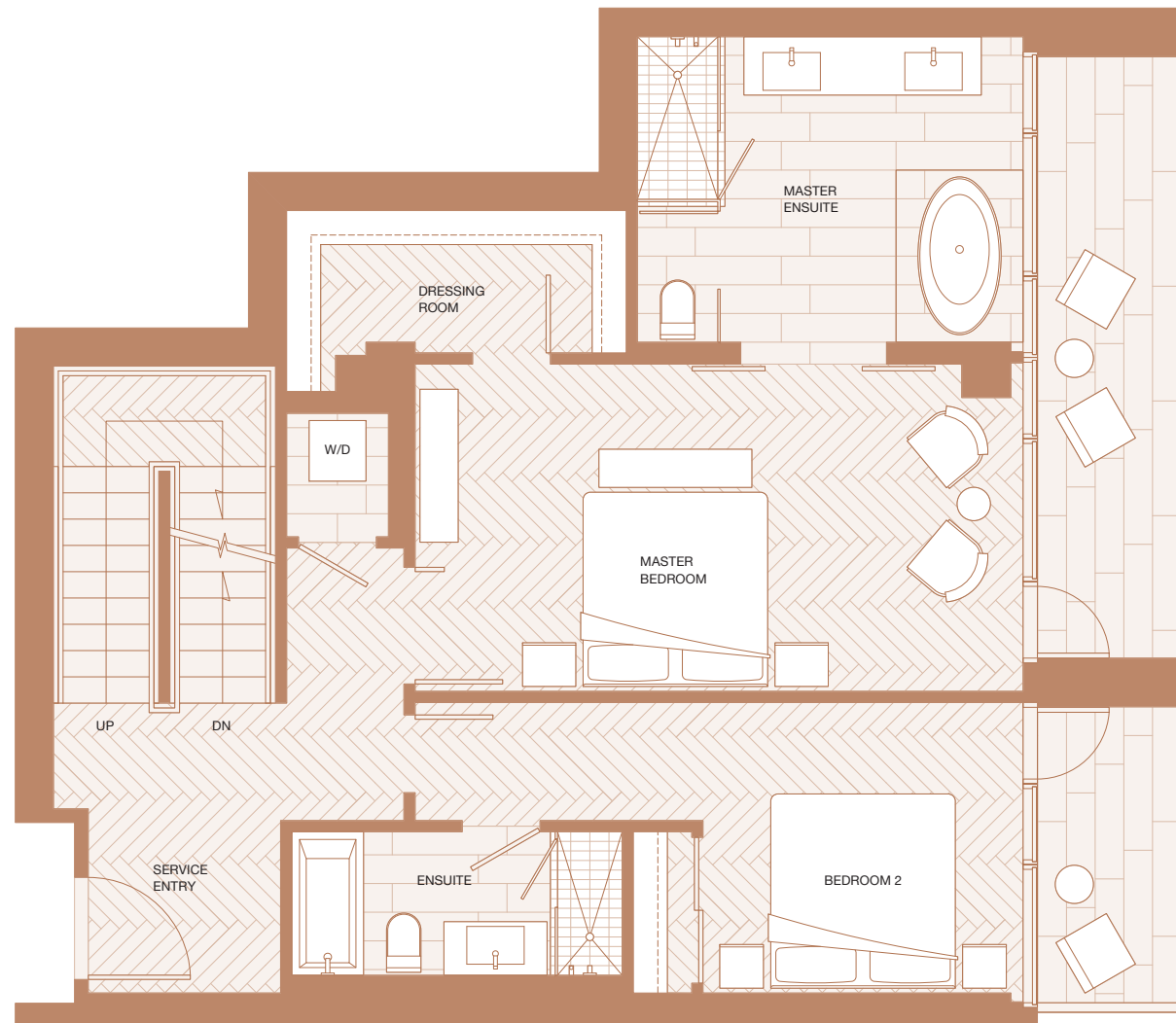
Lower Floor

Indoor Living 757 sf
Outdoor Living 117 sf



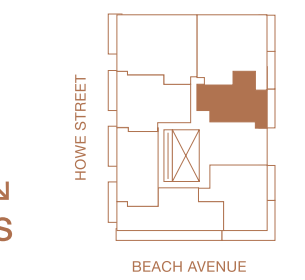
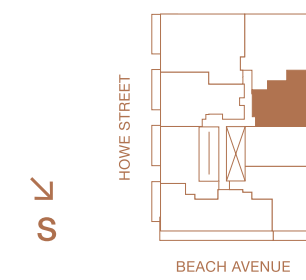
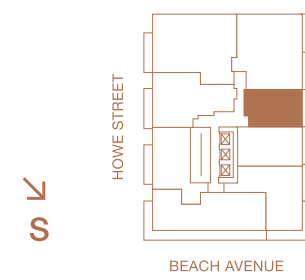
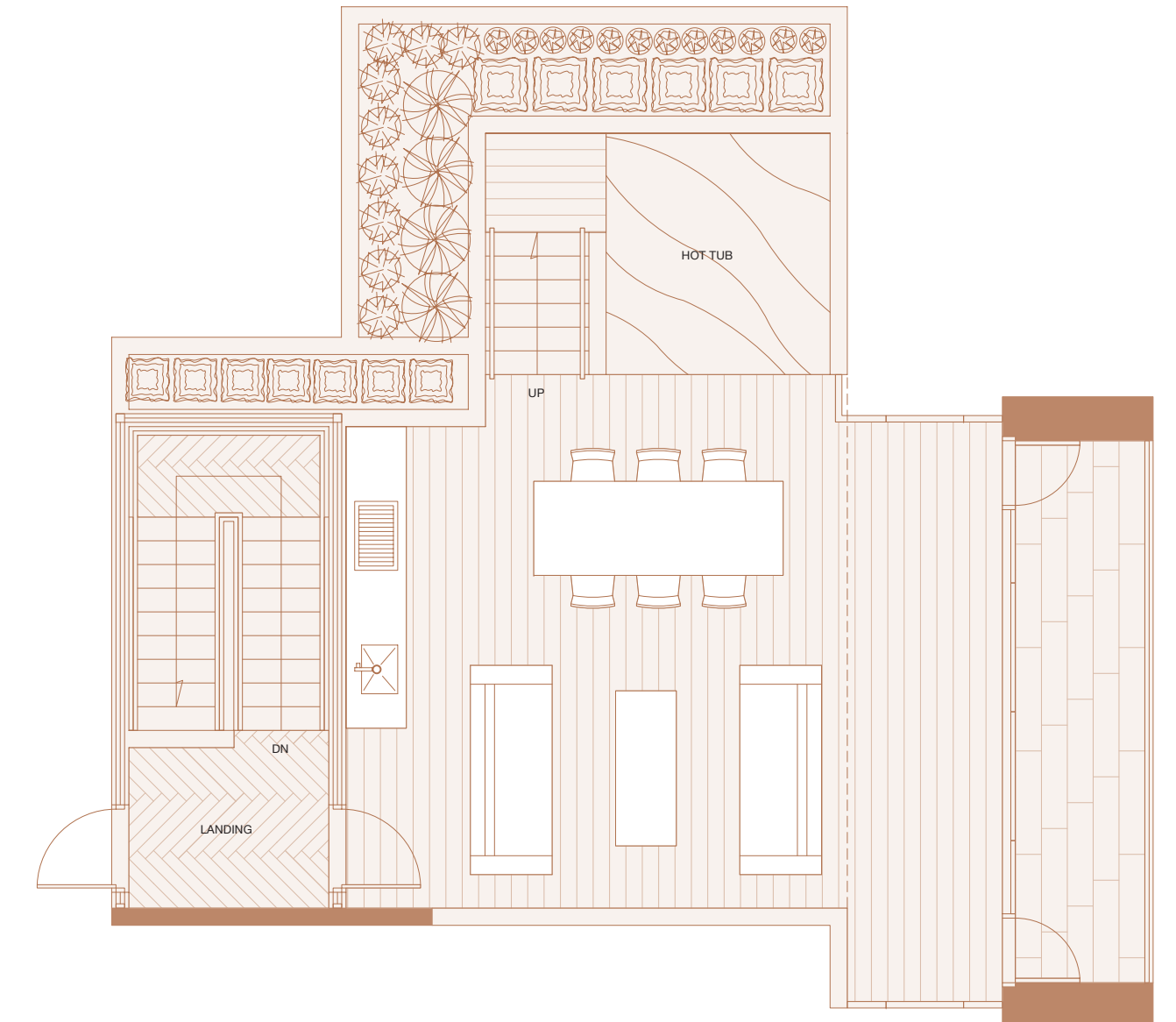
Upper Floor

Indoor Living 982 sf
Outdoor Living 176 sf



Roof Terrace

Outdoor Living 1088 sf



Penthouse 9

Two Bedroom

Total Living 2114 sf Indoor Living 1879 sf Outdoor Living 235 sf

Inviting and open, the floor to ceiling windows showcase majestic views of False Creek and Mount Baker. The open concept grand salon and Boffi chef's kitchen with custom BIG-designed Corian island are ideal for entertaining guests. The master bedroom with spacious dressing room and a marble clad five-piece ensuite will feel like you're relaxing in your own private spa.



westbank **REIS**

DIMENSIONS, SIZES, SPECIFICATIONS, LAYOUTS AND MATERIALS ARE APPROXIMATE ONLY AND SUBJECT TO CHANGE WITHOUT NOTICE. E.&O.E.

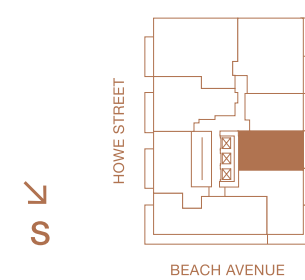
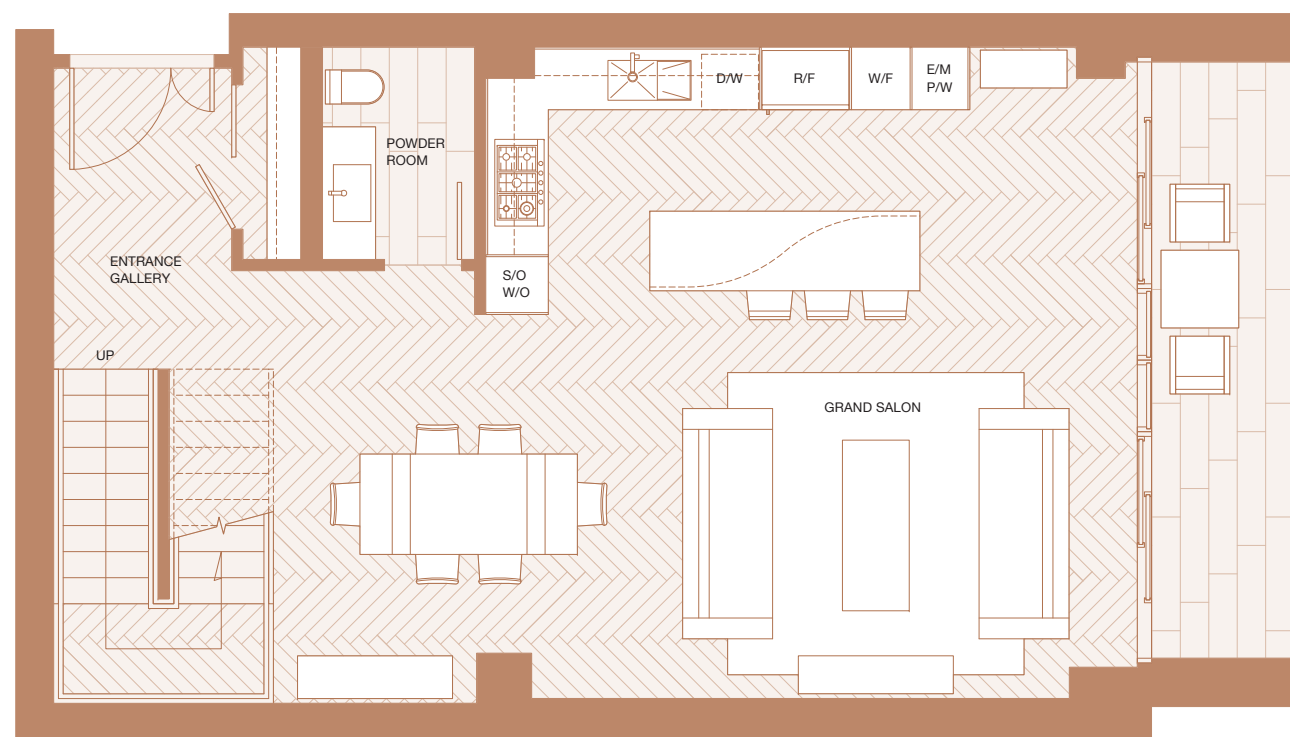
VANCOUVER
HOUSE

PENTHOUSE 9



Lower Floor

Indoor Living 933 sf
Outdoor Living 116 sf



Upper Floor

Indoor Living 946 sf
Outdoor Living 119 sf

