



PARK & METRO IS ALREADY 90 PER CENT SOLD

South Cambie might be one of the smallest of Vancouver's neighbourhoods but since the Canada Line went in, this former sleepy enclave is attracting young and old back into its fold. With a variety of upscale boutiques, bakeries, bars, specialty stores and a selection of ethnic restaurants, it's no wonder.

This is where one of the province's most respected builders, Marcon, unveiled Park & Metro, two low-rise red brick buildings.

Because of its desirable address, more than 90 per cent have already sold. "People from all over the Lower Mainland, including Richmond, Burnaby, and Vancouver itself, are excited that they can come back to the city and actually afford to buy a home," says Celia Chiu, Park & Metro Sales Manager. "This neighbourhood is close to some of the city's best private schools, which many of our buyers have told us was a real draw as well."

Park & Metro's collection of 73 one, two and three bedroom residences, ranging from 517 to 1,313 square feet, is located on a quiet residential street yet close to all of

the urban amenities home buyers are looking for.

Its location, nestled in one of the city's most coveted neighbourhoods, is also surrounded by parks, trails and athletic fields.

The West coast homes are distinguished by open interiors appointed with high quality, bright, spacious kitchens with Bosch stainless steel appliances, full-height pantry, Quartz countertops, built-in microwave and generous size master bedrooms with room for a king size bed, and the comfort of air conditioning for every home

On those balmy summer nights, residents can grab a bottle of wine and food and head to their oversized patios, decks or terraces and take in Vancouver's cityscapes. Park & Metro also features parking and full size storage/bicycle lockers and rain screen technology.

"For those who love the outdoors, Park & Metro is close to Queen Elizabeth Park, Langara Golf Course and the North Arm Trail Greenway," says Chiu. "With prices starting from \$415,800 we are appealing to a large cross section of buyers."



It's the level of quality, features and finishes that is Marcon's signature. Since 1985, locally owned Marcon has stayed true to its mandate of consistently exceeding expectations, both before and after homeowners receive the keys.

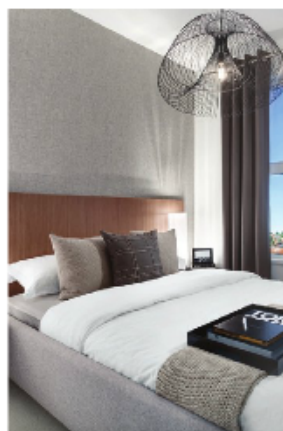
For more than three decades, Marcon has built a stellar reputation for constructing more than 8,900 quality homes across the province. Most notably though, the builder is renowned for its



Customer Care program.

"I don't think anyone in the Lower Mainland can touch Marcon's customer service department," says Chiu. "Its comprehensive service continues throughout the process and beyond, which means any issue or problem will be resolved quickly and efficiently."

Don't miss this opportunity to buy in South Cambie. With more than 90 per cent of the homes in both buildings sold, Chiu expects



them to sell fast. Three bedroom townhomes are also available, ranging from 1,496 to 1,927 SF.

The presentation centre and display home, located at 688 South West Marine Drive, Vancouver, is open daily (except Fridays) from noon to 5 p.m.

For more information call 604-325-8111, email sales@parkandmetro.ca or visit www.marcon.ca/parkandmetro. Estimated occupancy is Fall 2017.