



HAZEL

A perfectly designed home in historic Maillardville

In the heart Maillardville district – one of the most historic neighbourhoods in Coquitlam -lies a new contemporary boutique style apartment development called Hazel. Built by a well-respected builder in the industry, Hazel is inspired by the neighbourhood's French-Canadian heritage.

The building is a modern take on French architecture, which showcases brick accents, wrought iron accents and gabled roof lines fronting Roderick Ave., creating a look that offers timeless elegance.

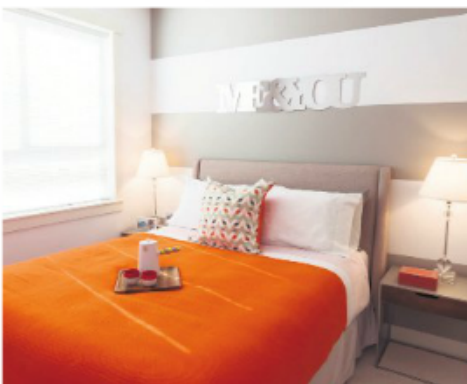
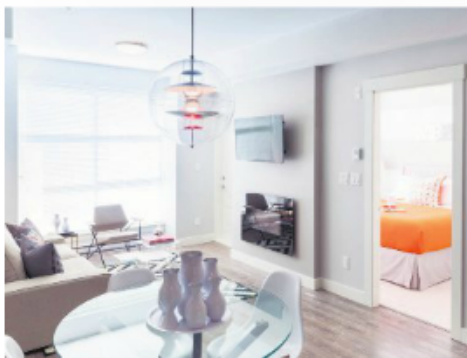
This collection of 34 stunning one, two and three bedroom apartment homes is the latest offering from developer Phoenix Homes, a company that brings decades of award-winning experience.

Hazel offers a unique opportunity to purchase a timeless West coast modern residence, each with its own oversized private balcony or patio, for the busy, city dwellers. "The patios on the floor level can easily accommodate 15 guests while entertaining," says Kiran Rai, Marketing Director, Platinum Project Marketing.

Hazel's location is unrivalled in its proximity and access to all parts of Metro Vancouver – within very easy and close access to Lougheed and the Trans-Canada highways and the Millennium SkyTrain line, as well as within walking distance to a great mix of cafes, restaurants and shopping.

"Hazel is very family-friendly. It is only a block away from the elementary school and close to parks and forested hiking trails," adds Rai.

In keeping with the sophisticated heritage of the exteriors, the modern interiors, ranging from 554 to 971 square feet, feature high-end finishes such as nine-foot



ceilings, 7.5" wide plank laminate flooring throughout the entry, kitchen, living and dining areas and contemporary style carpeting in all bedrooms.

The kitchens will inspire you to cook with their stainless steel appliances, wood grain laminate cabinetry, quartz countertops, large porcelain high gloss backsplash tile, a unique open shelf in accent colour, stainless steel undermount double bowl sink as well as in-sink disposal.

Outside Hazel offers green space, spacious decks and patios, beautiful landscaping and a children's play area for you to enjoy a coffee and meet your neighbours.

For nearly two decades, Phoenix Homes has been and continues to be a trusted name in the industry; having built more than 500 homes in the Lower Mainland. Based on honesty and integrity, you can rest assured that your home will be one you cherish for decades to come.

Whether you are a first time buyer or a young family starting out, you will be duly impressed by the rich attention to detail and the incomparable value of Hazel.

Nicely appointed new homes, with timeless beauty and lush greenery right outside your doorstep at such value are rare today. A one bedroom home starts at only \$220,900, while a three bedroom home starts at \$350,900. This is an opportunity you definitely don't want to miss. The Hazel presentation centre and display home, located at #104-827 Roderick Ave., Coquitlam, is open daily from noon to 5pm (except Fridays).

For more information, call 604-937-2599, e-mail info@liveathazel.com or visit www.liveathazel.com. Your new home awaits and is move-in ready!