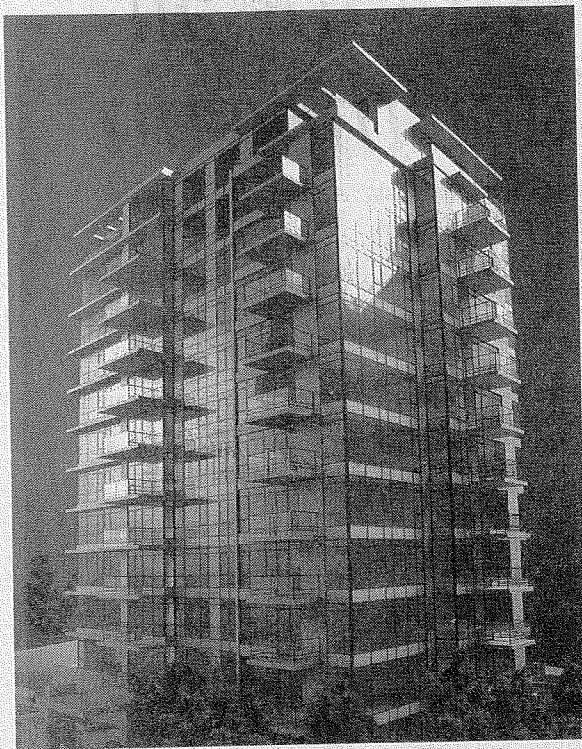


# Avedon: Dramatic Views and Sophisticated Style in South Granville



Contemporary Northwest-style architecture in South Granville – the intersection of art and fashion.

Homebuyers in the West Side's chic South Granville neighbourhood say they just can't imagine living anywhere else, and that's great news for Avedon. Polygon's exclusive high-rise community is proving to be irresistible as the new local favourite.

"Most of our purchasers are people who already live in this neighbourhood, or who lived here previously and want to move back," says Sales Manager Laura Cavanagh. "It's such a great area. You can walk everywhere – even Granville Island is just a ten minute walk, and for gourmet food and shopping, nothing else compares."

Dramatically rising above West 14th Avenue, Avedon's exclusive collection of just 45 homes offers spacious two bedroom plans ranging up to approximately 1,200 square feet in size. Many suites offer stunning views of the city and North Shore mountains.

"Buyers are telling us they were waiting for just the right home in this area. They love the view and interior style – it's contemporary and urban, not cold like the way some high-rise interiors are," says Cavanagh.

A captivating composition of rhythmic line patterns and bold angles, Avedon is designed by architect James Hancock and combines classical forms with distinctly contemporary Northwest design principles. Cantilevered balconies of architecturally framed glass overlook the cityscape

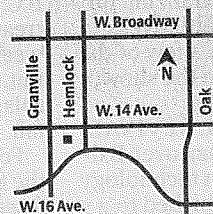
and beyond to the mountains and English Bay. Airy roof canopies appear to float above the penthouse level, punctuated by skylights bathing oversized decks with sunlight. Almost an acre of beautiful greenery surrounds the tower, designed with a nod to century-old Shaughnessy traditions of banquet lawns and secret gardens.

Interiors at Avedon are a testament to the pure elegance of clean lines, simple shapes and natural textures. With only four homes per floor, every home at Avedon is situated on a corner with two distinct points of view. Open floorplans, airy nine foot ceilings and soaring glass window-

walls suffuse each home with sunlight. A choice of two natural colour palettes will complement your established sense of style. Avedon's exceedingly well designed kitchens feature extra-wide natural granite slab countertops, rich hardwood cabinetry and a custom wine tower. Every detail has been chosen with consummate attention to comfort and quality of life.

The South Granville neighbourhood is undeniably on Canada's leading edge of art, fashion, culture and cuisine. A vibrant pedestrian shopping district with a distinct uptown flair, this area is home to dozens of exceptional designer boutiques, home décor shops, antique stores, bistros and restaurants. For downtown commuters, it couldn't be easier – a five minute drive over the bridge.

For your peace of mind, Avedon is constructed of solid concrete and steel and is backed by 2-5-10 warranties from St. Paul Guarantee and Polygon's legendary Customer Service team. The Avedon presentation centre is located at 2911 Granville Street and is open from noon until 6pm daily except Fridays. Prices from \$648,000. For more information, call 604-738-8713.



Polygon Avedon Tower Ltd.