



VANCOUVER WESTSIDE & DOWNTOWN SPECIALISTS

604.671.7000

www.6717000.com



SHAUGHNESSY MANSION

1188 Wolfe Ave. \$5,480,000
Spectacular 9280 sf Shaughnessy Mansion on 3/4 acre lot. In First Shaughnessy. Commanding city & mtn view from 3 levels. Completely renovated keeping yesteryear's charm & character. 7 beds, 8 baths & outdoor pool.



SHAUGHNESSY MANSION

3851 Marguerite \$4,980,000
6000 sf, 4 level Arts & Crafts style home located in 1st Shaughnessy just off Angus Drive with Heritage "A" designation. New kitchen & appliances, hardwood floors etc. Currently undergoing outside retrofit.



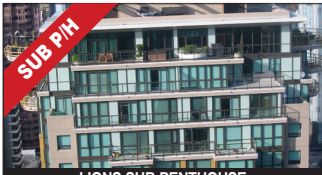
QUAYWEST RESORT

3F - 1067 Marinaside \$1,999,888
1668 sf 3 bed, 3 bath, waterfront T/H at Quaywest. Totally upgraded with H/W floors, kitch & baths with granite & stainless steel. Sub-Zero & Bosch appliances. 450 sf of deck & fantastic south water view



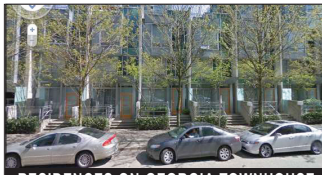
6TH & CAMBIE - LAND & BUILDING

2130 - 2132 Alberta - 6th & Cambie \$1,690,000
2357 sf, 2 level. Totally rebuilt 10 yrs ago). Lower level presently used as pet clinic, upper as private residence. Bonus: 1200 sf 3rd floor roof deck with hot tub. Easy to show.



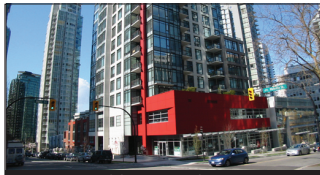
LIONS SUB-PENTHOUSE

3202 - 1331 Alberni \$1,499,000
1800 sf luxury sub P/H at Lions east tower. Features fantastic west view of ocean & harbour. 2 bdrm, 3 baths, H/W floors, larger master & extra closet space.



RESIDENCES ON GEORGIA TOWNHOUSE

1271 Alberni (at Jervis) \$1,450,000
1681 sf T/H at "R.O.G." Totally upgraded with the best of finishings. 2 bed + den, 3 level, large patio on front & back + roof deck. Must be seen to be appreciated.



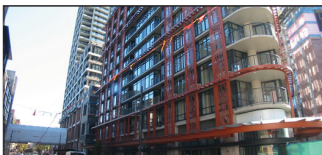
COAL HARBOUR

805 - 1211 Melville \$1,150,000
1345 sf rarely available N/W corner 3 bed, 3 baths at "The Ritz." Totally upgraded, a true gem. Shows beautifully, corridor view.



LIVE/WORK OFFICE STRATA

2J - 1033 Marinaside \$1,049,000
1483 sf 2 bed, 2 level garden residence. Work downstairs (613 sf), live upstairs (870 sf). Fantastic opportunity for this dual zone property. Work address 1050 Pacific.



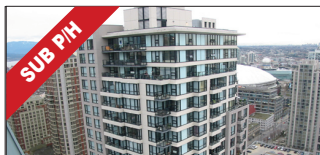
WOODWARDS W-43: WEST TOWER

1606 - 128 W Cordova \$668,000
1143 sf, 2 bdrm + den, S/E facing at Woodward's West Tower. Best priced suite in complex. Currently rented at \$2700/mo. Fully furnished (furniture not included in price). Beautiful open plan, must be seen.



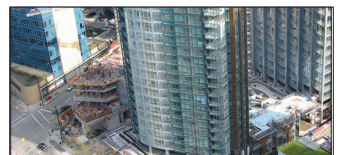
PENTHOUSE AT THE 'GEORGE'

2208 - 1420 W. Georgia \$655,000
928 sf, 2 bed, 2 bath, 2 level penthouse at "George." Features 9.5' ceilings, large deck, laminate floors & stainless appliances, 1 parking & 1 storage locker. Gym on main floor.



YALETOWN PARK 3 PENTHOUSE

2805 - 977 Mainland "YP3" \$799,000
1060 sf, 2 bed + den, S/W facing sub-penthouse at Yaletown Park 3. Features updated kitchen, real hardwood floors & good sized S/W balcony. Easy to show.



COAL HARBOUR

403 - 1189 Melville \$708,800
Stunning north-facing 2 bed, 2 bath condo at "The Melville." Corner unit with lots of windows & open balcony, granite kitchen, stainless appliances & great facilities.



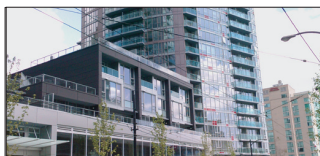
RESIDENCES ON GEORGIA SKY PAD

3003 - 1288 West Georgia \$699,000
Remodelled 1000 sf 2 bed, 2 bath N/E facing corner unit at "R.O.G." Tasteful upgrades include Cherrywood floors, custom organizers, granite counter & large view deck.



888 BEACH

1104 - 1501 Howe (at Beach) \$699,000
1107 sf 2 bed, 2 bath remodelled N/W corner suite at "888 Beach." Great floorplan, generous bdrms, engineered H/W floors, granite counters & new appliances. Shows beautifully.



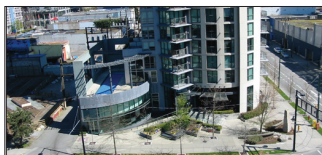
TV TOWERS I

602 - 788 Hamilton \$525,000
874 sf, W facing, bright 2 bed suite at TV Towers I. Tenanted at \$2000/mo until Feb 28/11. Shows beautifully. Limited showing until tenant out.



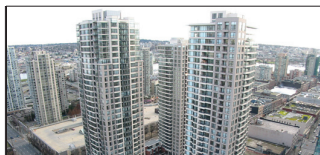
WEST OF DENMAN

703 - 1816 Haro \$449,900
756 sf completely renovated 2 bed suite at Huntington Place. Features new kitchen, new bath & solid real hardwood floors. Facilities include outdoor pool & gardens.



PACIFIC & RICHARDS

302 - 501 Pacific \$389,999
592 sf, S/E facing 1 bed with balcony. Granite counters, stainless appliances & peek-a-boo view of False Creek. Presently tenanted at \$1250/mo till Mar 1/12.



YALETOWN PARK 1

902 - 928 Homer (YP1) \$349,000
492 sf, west facing 1 bed + home office + small patio at Yaletown Park - Tower 1. Features granite counters, stainless appliances & carpet. Includes 1 storage + 1 parking stall.

COMMERCIAL DEVELOPMENT SITE
21427 83rd Ave near 216 St. proposed interchange in Willoughby Heights in Langley. 1.51 acres for sale (65,000 sf) + properties on either side may also be available (for another 3 acres). Currently zoned SR-2. Suburban Residential with 4200 sf house & a few outbuildings on property. Potential future re-zoning to Highway Commercial once interchange is finished in 2013 (strip mall, hotel?)
\$1,999,000
N. SURREY LAND ASSEMBLY
11880 - 11920 - 96 AVE. 4 lots with 275 frontage & 36,000 sf of land, zoned single family. Most properties currently rented. Great holding property. Go to web for info package & area video:
www.671.7000.com/Biz **\$2,200,000**

0093084 0711